

For Research Use Only

# AADACL1 Polyclonal antibody

Catalog Number: 14021-1-AP



## Basic Information

**Catalog Number:**

14021-1-AP

**Size:**

150UL, Concentration: 180 µg/ml by Bradford method using BSA as the standard;

**Source:**

Rabbit

**Isotype:**

IgG

**Immunogen Catalog Number:**

AG5136

**GenBank Accession Number:**

BC047588

**GeneID (NCBI):**

57552

**Full Name:**

arylacetamide deacetylase-like 1

**Calculated MW:**

46 kDa

**Observed MW:**

55 kDa

**Purification Method:**

Antigen affinity purification

**Recommended Dilutions:**

WB 1:500-1:1000

IP 0.5-4.0 ug for IP and 1:500-1:1000 for WB

IHC 1:20-1:200

IF 1:10-1:100

## Applications

**Tested Applications:**

IF, IHC, IP, WB, ELISA

**Species Specificity:**

human, mouse, rat

**Note-IHC: suggested antigen retrieval with TE buffer pH 9.0; (\*) Alternatively, antigen retrieval may be performed with citrate buffer pH 6.0**

**Positive Controls:**

WB: COLO 320 cells,

IP: COLO 320 cells,

IHC: human brain tissue, human kidney tissue, human lung tissue, human ovary tissue, human skin tissue, human spleen tissue

IF: COLO 320 cells,

## Background Information

AADACL1 (Arylacetamide deacetylase-like 1) is also named as NCEH1, KIAA1363 and belongs to the 'GDxG' lipolytic enzyme family. The transmembrane enzyme, AADACL1, controls the production of the monoalkylglycerol ether (MAGE) class of NELS in cancer cells and acts as a 2-acetyl MAGE hydrolase and is likely the principal source for this activity in tumor cells (PMID:21513884). The full length protein has three glycosylation sites and can be N-glycosylated (PMID:19159218). It has 3 isoforms produced by alternative splicing.

## Storage

**Storage:**

Store at -20°C. Stable for one year after shipment.

**Storage Buffer:**

PBS with 0.02% sodium azide and 50% glycerol pH 7.3.

Aliquoting is unnecessary for -20°C storage

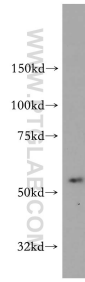
For technical support and original validation data for this product please contact:

T: 1 (888) 4PTGLAB (1-888-478-4522) (toll free in USA), or 1(312) 455-8498 (outside USA)

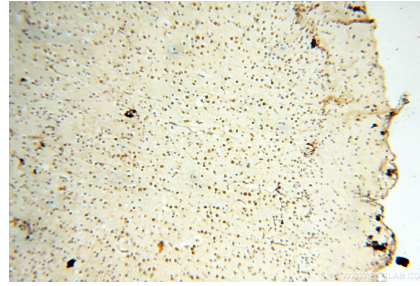
E: proteintech@ptglab.com  
W: ptglab.com

**This product is exclusively available under Proteintech Group brand and is not available to purchase from any other manufacturer.**

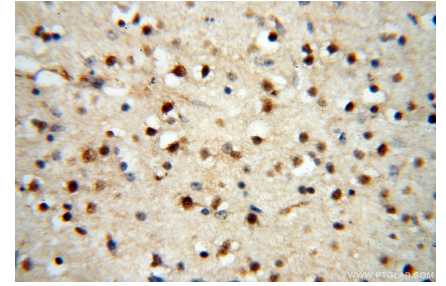
## Selected Validation Data



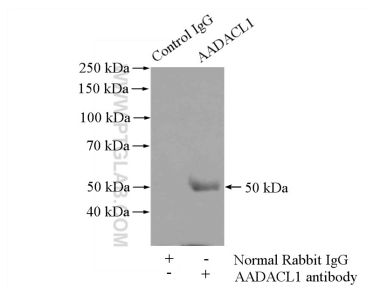
COLO 320 cells were subjected to SDS PAGE followed by western blot with 14021-1-AP (AADACL1 antibody) at dilution of 1:500 incubated at room temperature for 1.5 hours.



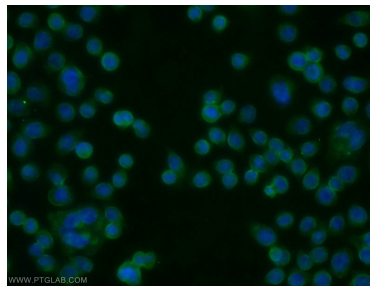
Immunohistochemical analysis of paraffin-embedded human brain using 14021-1-AP (AADACL1 antibody) at dilution of 1:50 (under 10x lens).



Immunohistochemical analysis of paraffin-embedded human brain using 14021-1-AP (AADACL1 antibody) at dilution of 1:50 (under 40x lens).



IP Result of anti-AADACL1 (IP:14021-1-AP, 4ug; Detection:14021-1-AP 1:500) with COLO 320 cells lysate 400ug.



Immunofluorescent analysis of COLO 320 cells using 14021-1-AP (AADACL1 antibody) at dilution of 1:25 and Alexa Fluor 488-conjugated AffiniPure Goat Anti-Rabbit IgG(H+L).