

For Research Use Only

ABHD2 Polyclonal antibody

Catalog Number: 14039-1-AP

Featured Product

9 Publications



Basic Information

Catalog Number:

14039-1-AP

Size:

150ul, Concentration: 180 ug/ml by Nanodrop;

Source:

Rabbit

Isotype:

IgG

Immunogen Catalog Number:

AG5108

GenBank Accession Number:

BC019248

GeneID (NCBI):

11057

UNIPROT ID:

P08910

Full Name:

abhydrolase domain containing 2

Calculated MW:

48 kDa

Observed MW:

48 kDa

Purification Method:

Antigen affinity purification

Recommended Dilutions:

WB: 1:500-1:1000

IHC: 1:50-1:500

IF/ICC: 1:50-1:500

Applications

Tested Applications:

WB, IHC, IF/ICC, ELISA

Cited Applications:

WB, IHC, IF

Species Specificity:

human, mouse, rat

Cited Species:

human, mouse

Note-IHC: suggested antigen retrieval with TE buffer pH 9.0; (*) Alternatively, antigen retrieval may be performed with citrate buffer pH 6.0

Positive Controls:

WB : HepG2 cells, HEK-293 cells

IHC : human stomach tissue,

IF/ICC : HEK-293 cells,

Notable Publications

Author	Pubmed ID	Journal	Application
Xin-hui Cao	36125462	Cancer Med	WB
Ida Björkgren	34568325	Front Cell Dev Biol	WB,IF
Melissa R Miller	26989199	Science	WB,IF

Storage

Storage:

Store at -20°C. Stable for one year after shipment.

Storage Buffer:

PBS with 0.02% sodium azide and 50% glycerol, pH7.3

Aliquoting is unnecessary for -20°C storage

*** 20ul sizes contain 0.1% BSA

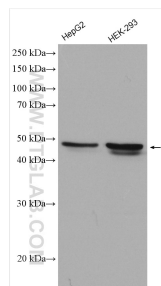
For technical support and original validation data for this product please contact:

T: 1 (888) 4PTGLAB (1-888-478-4522) (toll free in USA), or 1(312) 455-8498 (outside USA)

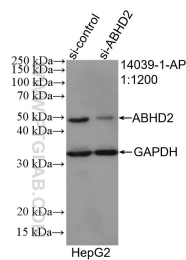
E: proteintech@ptglab.com
W: ptglab.com

This product is exclusively available under Proteintech Group brand and is not available to purchase from any other manufacturer.

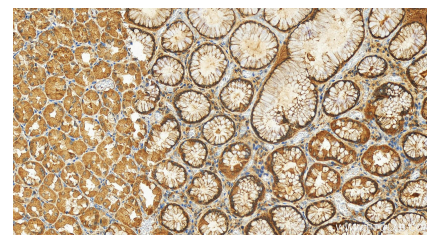
Selected Validation Data



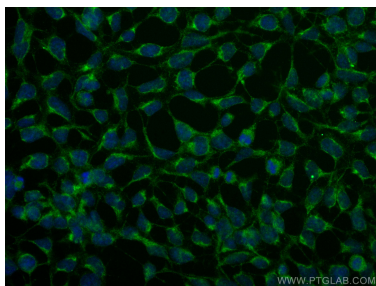
Various lysates were subjected to SDS PAGE followed by western blot with 14039-1-AP (ABHD2 antibody) at dilution of 1:600 incubated at room temperature for 1.5 hours.



WB result of ABHD2 antibody (14039-1-AP; 1:1200; incubated at room temperature for 1.5 hours) with sh-Control and sh-ABHD2 transfected HepG2 cells.



Immunohistochemical analysis of paraffin-embedded human stomach tissue slide using 14039-1-AP (ABHD2 antibody) at dilution of 1:200 (under 20x lens). Heat mediated antigen retrieval with Tris-EDTA buffer (pH 9.0).



Immunofluorescent analysis of (-20°C Ethanol) fixed HEK-293 cells using ABHD2 antibody (14039-1-AP) at dilution of 1:200 and CoraLite@488-Conjugated AffiniPure Goat Anti-Rabbit IgG(H+L).