

For Research Use Only

# UBE2S Polyclonal antibody

Catalog Number: 14115-1-AP

Featured Product

15 Publications



## Basic Information

### Catalog Number:

14115-1-AP

### Size:

150ul, Concentration: 650 ug/ml by Nanodrop and 333 ug/ml by Bradford method using BSA as the standard;

### Source:

Rabbit

### Isotype:

IgG

### Immunogen Catalog Number:

AG5264

### GenBank Accession Number:

BC066948

### GeneID (NCBI):

27338

### UNIPROT ID:

Q16763

### Full Name:

ubiquitin-conjugating enzyme E2S

### Calculated MW:

222 aa, 24 kDa

### Observed MW:

28 kDa

### Purification Method:

Antigen affinity purification

### Recommended Dilutions:

WB: 1:1000-1:6000

IP: 0.5-4.0 ug for 1.0-3.0 mg of total protein lysate

IHC: 1:50-1:500

## Applications

### Tested Applications:

WB, IHC, IP, ELISA

### Cited Applications:

WB, IHC, IF, IP, CoIP

### Species Specificity:

human, mouse, rat

### Cited Species:

human, mouse

**Note-IHC: suggested antigen retrieval with TE buffer pH 9.0; (\*) Alternatively, antigen retrieval may be performed with citrate buffer pH 6.0**

### Positive Controls:

**WB:** MCF-7 cells, HEK-293T cells, MOLT-4 cells, PC-3 cells, HEK-293 cells, HeLa cells

**IP:** A2780 cells,

**IHC:** human liver cancer tissue, human breast cancer tissue, human skin tissue, human ovary tumor tissue

## Background Information

UBE2S (Ubiquitin-conjugating enzyme E2 S) is also named as E2EPF and belongs to the ubiquitin-conjugating enzyme family. It acts as an essential factor of the anaphase promoting complex/cyclosome (APC/C) and a cell cycle-regulated ubiquitin ligase that controls progression through mitosis. Overexpression of UBE2S can increase tumor cell proliferation, invasion, and metastasis through the VHL-HIF pathway (PMID:16819549).

## Notable Publications

Author	Pubmed ID	Journal	Application
Wenjing Hu	34535173	J Ovarian Res	WB, IHC
Shengmeng Peng	35637955	Int J Biol Sci	WB, IHC
Shusaku Yoshimura	28257844	Biochem Biophys Res Commun	WB, IHC

## Storage

### Storage:

Store at -20°C. Stable for one year after shipment.

### Storage Buffer:

PBS with 0.02% sodium azide and 50% glycerol, pH7.3

Aliquoting is unnecessary for -20°C storage

\*\*\* 20ul sizes contain 0.1% BSA

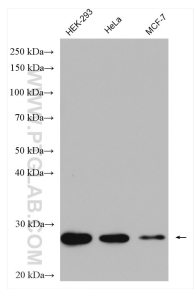
For technical support and original validation data for this product please contact:

T: 1 (888) 4PTGLAB (1-888-478-4522) (toll free in USA), or 1(312) 455-8498 (outside USA)

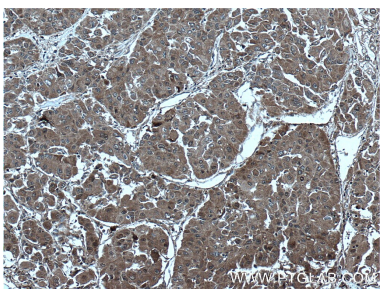
E: [proteintech@ptglab.com](mailto:proteintech@ptglab.com)  
W: [ptglab.com](http://ptglab.com)

This product is exclusively available under Proteintech Group brand and is not available to purchase from any other manufacturer.

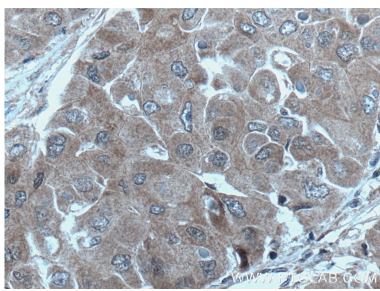
Selected Validation Data



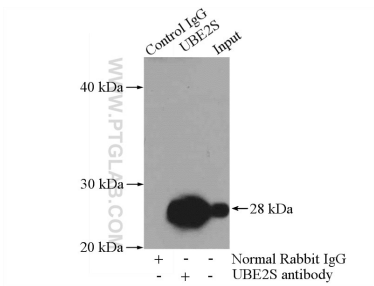
Various lysates were subjected to SDS PAGE followed by western blot with 14115-1-AP (UBE2S antibody) at dilution of 1:4000 incubated at room temperature for 1.5 hours.



Immunohistochemical analysis of paraffin-embedded human liver cancer tissue slide using 14115-1-AP (UBE2S antibody) at dilution of 1:200 (under 10x lens). Heat mediated antigen retrieval with Tris-EDTA buffer (pH 9.0).



Immunohistochemical analysis of paraffin-embedded human liver cancer tissue slide using 14115-1-AP (UBE2S antibody) at dilution of 1:200 (under 40x lens). Heat mediated antigen retrieval with Tris-EDTA buffer (pH 9.0).



IP result of anti-UBE2S (IP:14115-1-AP, 4ug; Detection:14115-1-AP 1:1000) with A2780 cells lysate 960ug.