

For Research Use Only

RPS3A Polyclonal ANTIBODY



Catalog Number: 14123-1-AP

Featured Product

5 Publications

Basic Information

Catalog Number:

14123-1-AP

Size:

150UL, Concentration: 267 µg/ml by Bradford method using BSA as the standard;

Source:

Rabbit

Isotype:

IgG

Immunogen Catalog Number:

AG5273

GenBank Accession Number:

BC066926

GeneID (NCBI):

6189

Full Name:

ribosomal protein S3A

Calculated MW:

30 kDa

Observed MW:

35 kDa

Purification Method:

Antigen affinity purification

Recommended Dilutions:

WB 1:1000-1:8000

IP 0.5-4.0 µg for IP and 1:500-1:1000 for WB

IHC 1:20-1:200

IF 1:50-1:500

Applications

Tested Applications:

FC, IF, IHC, IP, WB, ELISA

Cited Applications:

IF, IHC, WB

Species Specificity:

human, mouse, rat

Cited Species:

human, mouse, Xenopus

Note-IHC: suggested antigen retrieval with TE buffer pH 9.0; (*) Alternatively, antigen retrieval may be performed with citrate buffer pH 6.0

Positive Controls:

WB: HeLa cells, A431 cells, A549 cells, HepG2 cells, Jurkat cells, Raji cells

IP: HepG2 cells,

IHC: human pancreas cancer tissue,

IF: HepG2 cells,

Background Information

RPS3a, a component of the ribosomal small subunit (40S), is a member of the A20 family of the deubiquitinating cysteine proteases. RPS3a is an inducing factor for oncogenic cellular transformation of Rat-1 cells by v-fos, and is highly expressed in most tumors including hepatocellular carcinoma and other cancers. On the other hand, RPS3a has also been described as a regulator of apoptosis and transcription factors

Notable Publications

Author	Pubmed ID	Journal	Application
Jean-Michel Cioni	30612743	Cell	IF
Yan Tang	30131868	Cell Discov	WB,IHC,IF
Qi Tong-Gang TG	24105791	Mol Cell Proteomics	WB

Storage

Storage:

Store at -20°C. Stable for one year after shipment.

Storage Buffer:

PBS with 0.02% sodium azide and 50% glycerol pH 7.3.

Aliquoting is unnecessary for -20°C storage

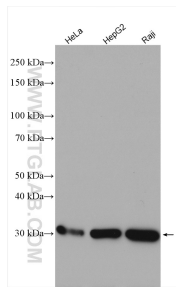
For technical support and original validation data for this product please contact:

T: 1 (888) 4PTGLAB (1-888-478-4522) (toll free in USA), or 1(312) 455-8498 (outside USA)

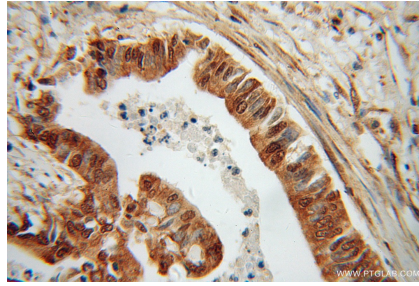
E: proteintech@ptglab.com
W: ptglab.com

This product is exclusively available under Proteintech Group brand and is not available to purchase from any other manufacturer.

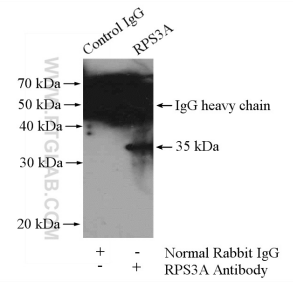
Selected Validation Data



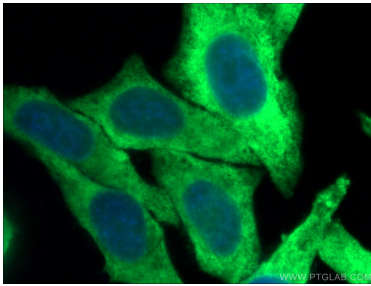
Various lysates were subjected to SDS PAGE followed by western blot with 14123-1-AP (RPS3A antibody) at dilution of 1:4000 incubated at room temperature for 1.5 hours.



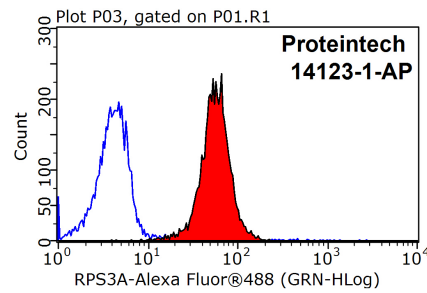
Immunohistochemical analysis of paraffin-embedded human pancreas cancer using 14123-1-AP (RPS3A antibody) at dilution of 1:100 (under 40x lens).



IP Result of anti-RPS3A (IP:14123-1-AP, 4ug; Detection:14123-1-AP 1:500) with HepG2 cells lysate 3600ug.



Immunofluorescent analysis of (4% PFA) fixed HepG2 cells using 14123-1-AP (RPS3A antibody) at dilution of 1:50 and Alexa Fluor 488-conjugated AffiniPure Goat Anti-Rabbit IgG(H+L).



1×10^6 HepG2 cells were stained with 0.2ug RPS3A antibody (14123-1-AP, red) and control antibody (blue). Fixed with 90% MeOH blocked with 3% BSA (30 min). Alexa Fluor 488-conjugated AffiniPure Goat Anti-Rabbit IgG(H+L) with dilution 1:1500.