

For Research Use Only

CHST15 Polyclonal antibody

Catalog Number: 14131-1-AP



Basic Information

Catalog Number: 14131-1-AP	GenBank Accession Number: BC027908	Purification Method: Antigen affinity purification
Size: 150ul , Concentration: 350 µg/ml by Nanodrop and 367 µg/ml by Bradford method using BSA as the standard;	GeneID (NCBI): 51363	Recommended Dilutions: WB 1:500-1:3000
Source: Rabbit	Full Name: carbohydrate (N-acetylgalactosamine 4-sulfate 6-O) sulfotransferase 15	
Isotype: IgG	Calculated MW: 65 kDa	
Immunogen Catalog Number: AG5258	Observed MW: 55-58 kDa, 65-69 kDa	

Applications

Tested Applications: WB, ELISA	Positive Controls: WB : mouse brain tissue,
Species Specificity: human, mouse	

Background Information

Carbohydrate sulfotransferase 15, also known as CHST15, BRAG, GALNAC4S6ST and KIAA0598, is a single-pass type II membrane protein which belongs to the sulfotransferase 1 family. CHST15 is a sulfotransferase that transfers sulfate from 3'-phosphoadenosine 5'-phosphosulfate (PAPS) to the C-6 hydroxyl group of the GalNAc 4-sulfate residue of chondroitin sulfate A and forms chondroitin sulfate E containing GlcA-GalNAc(4,6-SO₄) repeating units. It also transfers sulfate to a unique non-reducing terminal sequence, GalNAc(4SO₄)-GlcA(2SO₄)-GalNAc(6SO₄), to yield a highly sulfated structure similar to the structure found in thrombomodulin chondroitin sulfate. CHST15 may also act as a B-cell receptor involved in BCR ligation-mediated early activation that mediate regulatory signals key to B-cell development and / or regulation of B-cell-specific RAG expression. CHST15 is expressed in B-cell-enriched tissues but not in fetal or adult thymus. It is expressed in fetal and adult spleen, lymph node, tonsil, bone marrow and peripheral leukocytes. It can be detected as 49 kDa and 69 kDa.

Storage

Storage:
Store at -20°C. Stable for one year after shipment.
Storage Buffer:
PBS with 0.02% sodium azide and 50% glycerol pH 7.3.
Aliquoting is unnecessary for -20°C storage

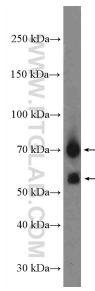
For technical support and original validation data for this product please contact:

T: 1 (888) 4PTGLAB (1-888-478-4522) (toll free in USA), or 1(312) 455-8498 (outside USA)

E: proteintech@ptglab.com
W: ptglab.com

This product is exclusively available under Proteintech Group brand and is not available to purchase from any other manufacturer.

Selected Validation Data



mouse brain tissue were subjected to SDS PAGE followed by western blot with 14131-1-AP (CHST15 Antibody) at dilution of 1:1500 incubated at room temperature for 1.5 hours.