

For Research Use Only

Beta ENaC Polyclonal antibody



Catalog Number: 14134-1-AP

Featured Product

7 Publications

Basic Information

| | | |
|--|---|--|
| Catalog Number: 14134-1-AP | GenBank Accession Number: BC036352 | Purification Method: Antigen affinity purification |
| Size: 150ul , Concentration: 650 µg/ml by Nanodrop and 333 µg/ml by Bradford method using BSA as the standard; | GeneID (NCBI): 6338 | Recommended Dilutions: WB 1:500-1:1000 IHC 1:50-1:500 |
| Source: Rabbit | Full Name: sodium channel, nonvoltage-gated 1, beta | |
| Isotype: IgG | Calculated MW: 640 aa, 73 kDa | |
| Immunogen Catalog Number: AG5348 | Observed MW: 75-80 kDa | |

Applications

| | |
|---|---|
| Tested Applications: IHC, WB, ELISA | Positive Controls: WB : PC-3 cells, mouse kidney tissue IHC : human kidney tissue, |
| Cited Applications: IHC, WB | |
| Species Specificity: human, mouse, rat | |
| Cited Species: hamster, human, mouse, rat | |

Note-IHC: suggested antigen retrieval with TE buffer pH 9.0; (*) Alternatively, antigen retrieval may be performed with citrate buffer pH 6.0

Background Information

SCNN1B, also named as SCNEB, ENaCB, Beta-NaCH and Beta-ENaC, belongs to the amiloride-sensitive sodium channel (TC 1.A.6) family and SCNN1B subfamily. Sodium permeable non-voltage-sensitive ion channel is inhibited by the diuretic amiloride. SCNN1B mediates the electrodiffusion of the luminal sodium (and water, which follows osmotically) through the apical membrane of epithelial cells. It controls the reabsorption of sodium in kidney, colon, lung and sweat glands. SCNN1B plays a role in taste perception.

Notable Publications

| Author | Pubmed ID | Journal | Application |
|-------------|-----------|----------------|-------------|
| Yalong Wang | 31753849 | J Exp Med | IHC |
| Bingji Jin | 29526865 | Exp Anim | WB |
| Guang Yang | 29439494 | Toxins (Basel) | WB |

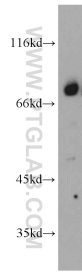
Storage

Storage:
Store at -20°C. Stable for one year after shipment.
Storage Buffer:
PBS with 0.02% sodium azide and 50% glycerol pH 7.3.
Aliquoting is unnecessary for -20°C storage

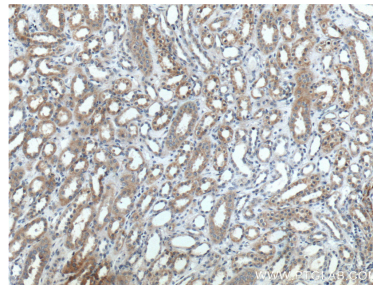
For technical support and original validation data for this product please contact:
T: 1 (888) 4PTGLAB (1-888-478-4522) (toll free in USA), or 1(312) 455-8498 (outside USA)
E: proteintech@ptglab.com
W: ptglab.com

This product is exclusively available under Proteintech Group brand and is not available to purchase from any other manufacturer.

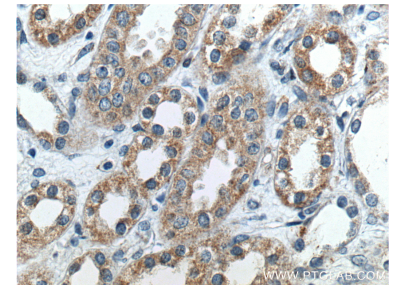
Selected Validation Data



PC-3 cells were subjected to SDS PAGE followed by western blot with 14134-1-AP (β -ENaC antibody) at dilution of 1:500 incubated at room temperature for 1.5 hours.



Immunohistochemical analysis of paraffin-embedded human kidney tissue slide using 14134-1-AP (β -ENaC Antibody) at dilution of 1:200 (under 10x lens).



Immunohistochemical analysis of paraffin-embedded human kidney tissue slide using 14134-1-AP (β -ENaC Antibody) at dilution of 1:200 (under 40x lens).