

For Research Use Only

LILRB2/CD85d Polyclonal antibody

Catalog Number: 14154-1-AP



Basic Information

Catalog Number: 14154-1-AP	GenBank Accession Number: BC036827	Purification Method: Antigen affinity purification
Size: 150ul , Concentration: 500 ug/ml by Nanodrop;	GeneID (NCBI): 10288	Recommended Dilutions: WB: 1:500-1:3000 IF/ICC: 1:50-1:500
Source: Rabbit	UNIPROT ID: Q8N423	
Isotype: IgG	Full Name: leukocyte immunoglobulin-like receptor, subfamily B (with TM and ITIM domains), member 2	
Immunogen Catalog Number: AG5336	Calculated MW: 598 aa, 65 kDa	
	Observed MW: 60-65 kDa	

Applications

Tested Applications: WB, IF/ICC, ELISA	Positive Controls: WB : HeLa cells, Jurkat cells, THP-1 cells
Species Specificity: human	IF/ICC : THP-1 cells,

Background Information

LILRB2 (Leukocyte immunoglobulin-like receptor subfamily B member 2), also known as ILT4, CD85d or MIR10, is a type I transmembrane glycoprotein that contains four extracellular immunoglobulin domains, a transmembrane domain, and three cytoplasmic immunoreceptor tyrosine-based inhibitory motifs (ITIMs) (PMID: 33928233). LILRB2 is mainly expressed in immunocytes including monocytes, macrophages, and dendritic cells, and transduces negative signals by its association with SHP-1 phosphatase via the ITIMs (PMID: 35717259). LILRB2 can interact with various ligands such as HLA-A, HLA-B, HLA-C, HLA-G, HLA-F, CD1c, CD1d, angiopoietin-like proteins (ANGPTLs), and SEMA4A.

Storage

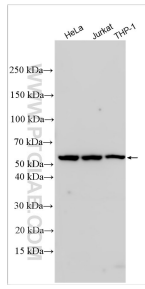
Storage:
Store at -20°C. Stable for one year after shipment.
Storage Buffer:
PBS with 0.02% sodium azide and 50% glycerol, pH7.3
Aliquoting is unnecessary for -20°C storage

*** 20ul sizes contain 0.1% BSA

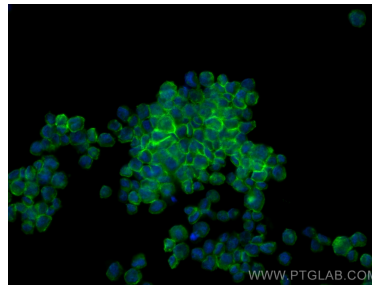
For technical support and original validation data for this product please contact:
T: 1 (888) 4PTGLAB (1-888-478-4522) (toll free in USA), or 1(312) 455-8498 (outside USA)
E: proteintech@ptglab.com
W: ptglab.com

This product is exclusively available under Proteintech Group brand and is not available to purchase from any other manufacturer.

Selected Validation Data



Various lysates were subjected to SDS PAGE followed by western blot with 14154-1-AP (LILRB2/CD85d antibody) at dilution of 1:1500 incubated at room temperature for 1.5 hours.



Immunofluorescent analysis of (4% PFA) fixed THP-1 cells using LILRB2/CD85d antibody (14154-1-AP) at dilution of 1:200 and CoraLite® 488-Conjugated Goat Anti-Rabbit IgG(H+L) (SA00013-2).