

For Research Use Only

# Alpha 1B-Glycoprotein Polyclonal antibody



Catalog Number: 14181-1-AP

## Basic Information

<b>Catalog Number:</b> 14181-1-AP	<b>GenBank Accession Number:</b> BC035719	<b>Purification Method:</b> Antigen affinity purification
<b>Size:</b> 150ul , Concentration: 500 µg/ml by Nanodrop and 153 µg/ml by Bradford method using BSA as the standard;	<b>GeneID (NCBI):</b> 1	<b>Recommended Dilutions:</b> WB 1:2000-1:20000 IHC 1:20-1:200 IF 1:10-1:100
<b>Source:</b> Rabbit	<b>Full Name:</b> alpha-1-B glycoprotein	
<b>Isotype:</b> IgG	<b>Calculated MW:</b> 54 kDa	
<b>Immunogen Catalog Number:</b> AG5414	<b>Observed MW:</b> 65 kDa	

## Applications

### Tested Applications:

IF, IHC, WB, ELISA

### Species Specificity:

human, mouse

**Note-IHC: suggested antigen retrieval with TE buffer pH 9.0; (\*) Alternatively, antigen retrieval may be performed with citrate buffer pH 6.0**

### Positive Controls:

WB : human plasma tissue, BxPC-3 cells, MCF-7 cells, mouse kidney tissue

IHC : human hepatocirrhosis tissue,

IF : HepG2 cells,

## Background Information

Alpha-1B-glycoprotein (A1BG) is a plasma protein and is a member of the immunoglobulin superfamily. A1BG contains 474 amino acids and has 5 intrachain disulfide bonds. It has been reported that cysteine-rich secretory protein 3 (CRISP-3) is a specific and high-affinity ligand of A1BG. A1BG-CRISP-3 complex displays a similar function in protecting the circulation from a potentially harmful effect of free CRISP3 (PMID: 15461460).

## Storage

### Storage:

Store at -20°C. Stable for one year after shipment.

### Storage Buffer:

PBS with 0.02% sodium azide and 50% glycerol pH 7.3.

Aliquoting is unnecessary for -20°C storage

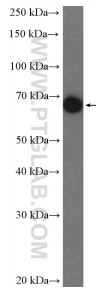
For technical support and original validation data for this product please contact:

T: 1 (888) 4PTGLAB (1-888-478-4522) (toll free in USA), or 1(312) 455-8498 (outside USA)

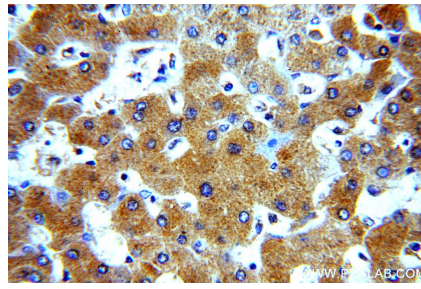
E: [proteintech@ptglab.com](mailto:proteintech@ptglab.com)  
W: [ptglab.com](http://ptglab.com)

**This product is exclusively available under Proteintech Group brand and is not available to purchase from any other manufacturer.**

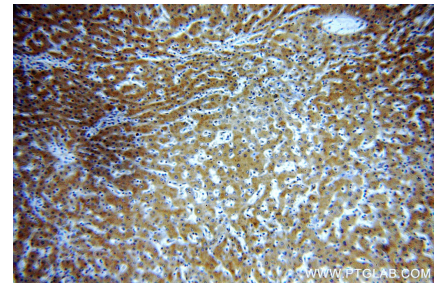
## Selected Validation Data



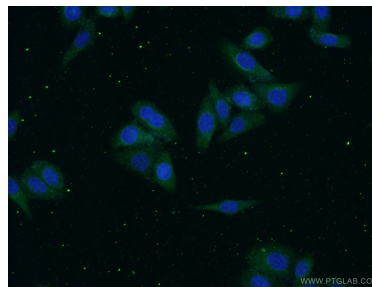
human plasma were subjected to SDS PAGE followed by western blot with 14181-1-AP (alpha-1B-glycoprotein antibody) at dilution of 1:5000 incubated at room temperature for 1.5 hours.



Immunohistochemical analysis of paraffin-embedded human hepatocirrhosis tissue slide using 14181-1-AP (alpha-1B-glycoprotein antibody) at dilution of 1:50 (under 40x lens).



Immunohistochemical analysis of paraffin-embedded human hepatocirrhosis tissue slide using 14181-1-AP (alpha-1B-glycoprotein antibody) at dilution of 1:50 (under 10x lens).



Immunofluorescent analysis of (-20°C Ethanol) fixed HepG2 cells using 14181-1-AP (alpha-1B-glycoprotein antibody) at dilution of 1:25 and Alexa Fluor 488-Conjugated AffiniPure Goat Anti-Rabbit IgG(H+L).