

For Research Use Only

PPP1R3B Polyclonal ANTIBODY



Catalog Number: 14190-1-AP

Featured Product

1 Publications

Basic Information

Catalog Number:

14190-1-AP

Size:

150UL, Concentration: 233 µg/ml by Bradford method using BSA as the standard;

Source:

Rabbit

Isotype:

IgG

Immunogen Catalog Number:

AG5521

GenBank Accession Number:

BC043388

GeneID (NCBI):

79660

Full Name:

protein phosphatase 1, regulatory (inhibitor) subunit 3B

Calculated MW:

33 kDa

Observed MW:

33 kDa

Purification Method:

Antigen affinity purification

Recommended Dilutions:

WB 1:1000-1:4000

Applications

Tested Applications:

WB, ELISA

Cited Applications:

WB

Species Specificity:

human, mouse

Cited Species:

human

Positive Controls:

WB: mouse liver tissue,

Background Information

Notable Publications

Author	Pubmed ID	Journal	Application
Qiqi Li	31553910	Cell Rep	WB

Storage

Storage:

Store at -20°C. Stable for one year after shipment.

Storage Buffer:

PBS with 0.1% sodium azide and 50% glycerol pH 7.3.

Aliquoting is unnecessary for -20°C storage

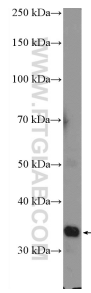
For technical support and original validation data for this product please contact:

T: 1 (888) 4PTGLAB (1-888-478-4522) (toll free in USA), or 1(312) 455-8498 (outside USA)

E: proteintech@ptglab.com
W: ptglab.com

This product is exclusively available under Proteintech Group brand and is not available to purchase from any other manufacturer.

Selected Validation Data



mouse liver tissue were subjected to SDS PAGE followed by western blot with 14190-1-AP (PPP1R3B antibody) at dilution of 1:2000 incubated at room temperature for 1.5 hours.