

For Research Use Only

TRIM24 Polyclonal antibody

Catalog Number: 14208-1-AP

Featured Product

45 Publications



Basic Information

Catalog Number:

14208-1-AP

Size:

150ul, Concentration: 800 ug/ml by Nanodrop;

Source:

Rabbit

Isotype:

IgG

Immunogen Catalog Number:

AG5417

GenBank Accession Number:

BC028689

GeneID (NCBI):

8805

UNIPROT ID:

O15164

Full Name:

tripartite motif-containing 24

Calculated MW:

117 kDa

Observed MW:

117 kDa

Purification Method:

Antigen affinity purification

Recommended Dilutions:

WB: 1:2000-1:12000

IP: 0.5-4.0 ug for 1.0-3.0 mg of total protein lysate

IHC: 1:50-1:200

IF/ICC: 1:200-1:800

Applications

Tested Applications:

WB, IHC, IF/ICC, IP, ELISA

Cited Applications:

WB, IHC, IF, IP, CoIP, ChIP, RIP

Species Specificity:

human, mouse, rat

Cited Species:

human, mouse, rat

Note-IHC: suggested antigen retrieval with TE buffer pH 9.0; (*) Alternatively, antigen retrieval may be performed with citrate buffer pH 6.0

Positive Controls:

WB: HeLa cells, L02 cells, BGC-823 cells, human heart tissue, mouse skeletal muscle tissue, MCF-7 cells

IP: HeLa cells,

IHC: human prostate cancer tissue,

IF/ICC: HeLa cells,

Background Information

TRIM24, also named as RNF82, TIF1 and TIF1A, interacts selectively in vitro with the AF2-activating domain of the estrogen receptors. Association with DNA-bound estrogen receptors, it requires the presence of estradiol. It is a regulation protein of P53. Defects in TRIM24 are a cause of thyroid papillary carcinoma (TPC) which is a common tumor of the thyroid that typically arises as an irregular, solid or cystic mass from otherwise normal thyroid tissue.

Notable Publications

| Author | Pubmed ID | Journal | Application |
|------------|-----------|-----------------------|-------------|
| Jun Chi | 27689360 | Aging (Albany NY) | WB, IHC |
| Tao Yu | 31554795 | Nat Commun | WB |
| Yanai Zhan | 26396593 | Epigenetics Chromatin | WB, IF, IP |

Storage

Storage:

Store at -20°C. Stable for one year after shipment.

Storage Buffer:

PBS with 0.02% sodium azide and 50% glycerol, pH7.3

Aliquoting is unnecessary for -20°C storage

*** 20ul sizes contain 0.1% BSA

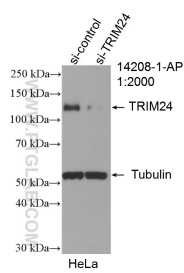
For technical support and original validation data for this product please contact:

T: 1 (888) 4PTGLAB (1-888-478-4522) (toll free in USA), or 1(312) 455-8498 (outside USA)

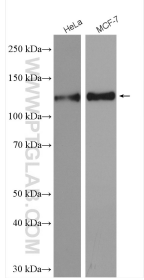
E: proteintech@ptglab.com
W: ptglab.com

This product is exclusively available under Proteintech Group brand and is not available to purchase from any other manufacturer.

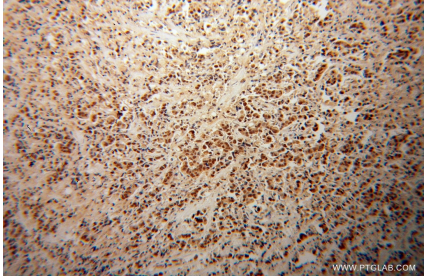
Selected Validation Data



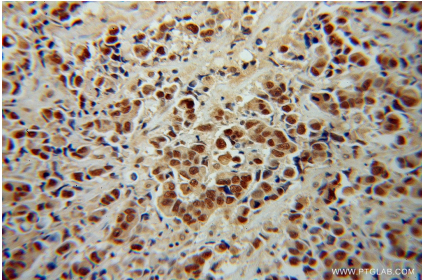
WB result of TRIM24 antibody (14208-1-AP; 1:2000; incubated at room temperature for 1.5 hours) with sh-Control and sh-TRIM24 transfected HeLa cells.



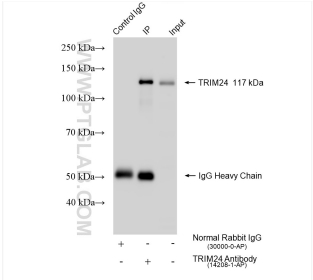
Various lysates were subjected to SDS PAGE followed by western blot with 14208-1-AP (TRIM24 antibody) at dilution of 1:6000 incubated at room temperature for 1.5 hours.



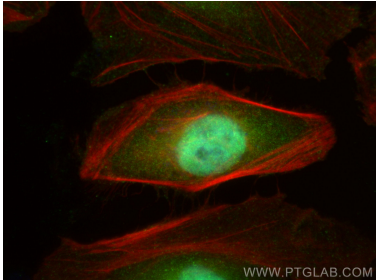
Immunohistochemical analysis of paraffin-embedded human prostate cancer using 14208-1-AP (TRIM24 antibody) at dilution of 1:100 (under 10x lens).



Immunohistochemical analysis of paraffin-embedded human prostate cancer using 14208-1-AP (TRIM24 antibody) at dilution of 1:100 (under 40x lens).



IP result of anti-TRIM24 (IP:14208-1-AP, 4ug; Detection:14208-1-AP 1:6000) with HeLa cells lysate 1085 ug.



Immunofluorescent analysis of (4% PFA) fixed HeLa cells using TRIM24 antibody (14208-1-AP) at dilution of 1:400 and Multi-rAb CoraLite® Plus 488-Goat Anti-Rabbit Recombinant Secondary Antibody (H+L) (RGAR002), CL594-phalloidin (red).