

For Research Use Only

Kallikrein 8 Polyclonal antibody



Catalog Number: 14232-1-AP

1 Publications

Basic Information

Catalog Number: 14232-1-AP	GenBank Accession Number: BC040887	Purification Method: Antigen affinity purification
Size: 150ul , Concentration: 307 µg/ml by Bradford method using BSA as the standard;	GeneID (NCBI): 11202	Recommended Dilutions: WB 1:500-1:1000 IHC 1:50-1:500
Source: Rabbit	Full Name: kallikrein-related peptidase 8	
Isotype: IgG	Calculated MW: 28 kDa	
Immunogen Catalog Number: AG5472	Observed MW: 30 kDa	

Applications

Tested Applications: IHC, WB, ELISA	Positive Controls: WB : HeLa cells, IHC : human ovary tumor tissue,
Cited Applications: WB	
Species Specificity: human, mouse, rat	
Cited Species: human	
Note-IHC: suggested antigen retrieval with TE buffer pH 9.0; (*) Alternatively, antigen retrieval may be performed with citrate buffer pH 6.0	

Background Information

KLK8(Kallikrein-8) is also named as NRPN, PRSS19, TADG14. It is a new member of the human kallikrein family, which is predicted to be secreted and expected to be present in biological fluids (PMID:12507964). The protein is detectable in ovarian cancer tissue extracts, serum, and ascites fluid, indicating that it may serve as a new ovarian cancer marker (PMID:12782581). KLK8 has one predicted glycosylation site (PMID:20940292) and it has some isoforms produced by alternative splicing.

Notable Publications

Author	Pubmed ID	Journal	Application
Tongmei Zhang	33011750	Cell Death Dis	WB

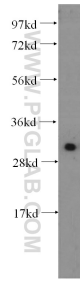
Storage

Storage:
Store at -20°C. Stable for one year after shipment.
Storage Buffer:
PBS with 0.02% sodium azide and 50% glycerol pH 7.3.
Aliquoting is unnecessary for -20°C storage

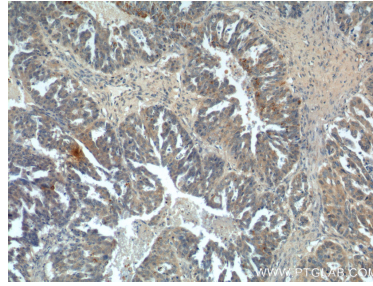
For technical support and original validation data for this product please contact:
T: 1 (888) 4PTGLAB (1-888-478-4522) (toll free in USA), or 1(312) 455-8498 (outside USA)
E: proteintech@ptglab.com
W: ptglab.com

This product is exclusively available under Proteintech Group brand and is not available to purchase from any other manufacturer.

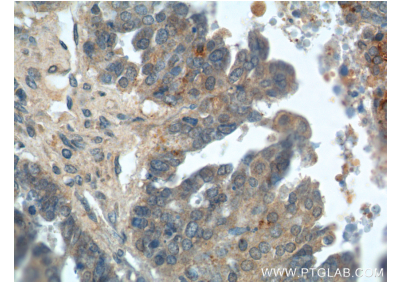
Selected Validation Data



HeLa cells were subjected to SDS PAGE followed by western blot with 14232-1-AP (Kallikrein 8 antibody) at dilution of 1:500 incubated at room temperature for 1.5 hours.



Immunohistochemical analysis of paraffin-embedded human ovary tumor tissue slide using 14232-1-AP (Kallikrein 8 antibody at dilution of 1:200 (under 10x lens).



Immunohistochemical analysis of paraffin-embedded human ovary tumor tissue slide using 14232-1-AP (Kallikrein 8 antibody at dilution of 1:200 (under 40x lens).