

For Research Use Only

# TFCP2L1 Polyclonal antibody

Catalog Number: 14248-1-AP **1 Publications**



## Basic Information

<b>Catalog Number:</b> 14248-1-AP	<b>GenBank Accession Number:</b> BC064698	<b>Purification Method:</b> Antigen affinity purification
<b>Size:</b> 150ul , Concentration: 367 µg/ml by Nanodrop and 367 µg/ml by Bradford method using BSA as the standard;	<b>GeneID (NCBI):</b> 29842	<b>Recommended Dilutions:</b> WB 1:500-1:1000
<b>Source:</b> Rabbit	<b>UNIPROT ID:</b> Q9NZI6	
<b>Isotype:</b> IgG	<b>Full Name:</b> transcription factor CP2-like 1	
<b>Immunogen Catalog Number:</b> AG5520	<b>Calculated MW:</b> 55 kDa	
	<b>Observed MW:</b> 55 kDa	

## Applications

<b>Tested Applications:</b> WB, ELISA	<b>Positive Controls:</b> WB : human placenta tissue,
<b>Cited Applications:</b> WB	
<b>Species Specificity:</b> human	
<b>Cited Species:</b> human	

## Background Information

Transcription factor CP2-like protein 1 (TFCP2L1) is a transcriptional regulator critical for maintaining mouse and human embryonic stem cell (ESC) pluripotency. The deletion of TFCP2L1 in mice reduced the expression of renal cell markers including ion transporters and cell identity proteins expressed in different segments of the distal nephron (PMID: 33097957).

## Notable Publications

Author	Pubmed ID	Journal	Application
Jian-Jun Wu	38435123	Int J Chron Obstruct Pulmon Dis	WB

## Storage

**Storage:**  
Store at -20°C. Stable for one year after shipment.  
**Storage Buffer:**  
PBS with 0.02% sodium azide and 50% glycerol pH 7.3.  
Aliquoting is unnecessary for -20°C storage

\*\*\* 20ul sizes contain 0.1% BSA

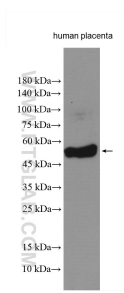
For technical support and original validation data for this product please contact:

T: 1 (888) 4PTGLAB (1-888-478-4522) (toll free in USA), or 1(312) 455-8498 (outside USA)

E: proteintech@ptglab.com  
W: ptglab.com

This product is exclusively available under Proteintech Group brand and is not available to purchase from any other manufacturer.

## Selected Validation Data



Human placenta tissue were subjected to SDS PAGE followed by western blot with 14248-1-AP (TFCP2L1 antibody) at dilution of 1:600 incubated at room temperature for 1.5 hours.