

For Research Use Only

MBD3 Polyclonal antibody

Catalog Number: 14258-1-AP

Featured Product

9 Publications



Basic Information

Catalog Number:

14258-1-AP

Size:

150ul, Concentration: 400 ug/ml by Nanodrop and 293 ug/ml by Bradford method using BSA as the standard;

Source:

Rabbit

Isotype:

IgG

Immunogen Catalog Number:

AG5531

GenBank Accession Number:

BC043619

GeneID (NCBI):

53615

UNIPROT ID:

O95983

Full Name:

methyl-CpG binding domain protein 3

Calculated MW:

33 kDa

Observed MW:

33 kDa

Purification Method:

Antigen affinity purification

Recommended Dilutions:

WB 1:500-1:1000

IP 0.5-4.0 ug for 1.0-3.0 mg of total protein lysate

IHC 1:20-1:200

IF/ICC 1:20-1:200

Applications

Tested Applications:

WB, IHC, IF/ICC, IP, ELISA

Cited Applications:

WB, IHC, IF, ChIP

Species Specificity:

human, mouse, rat

Cited Species:

human

Note-IHC: suggested antigen retrieval with TE buffer pH 9.0; (*) Alternatively, antigen retrieval may be performed with citrate buffer pH 6.0

Positive Controls:

WB: Y79 cells, COLO 320 cells, HeLa cells, Jurkat cells, MCF-7 cells, mouse testis tissue

IP: mouse testis tissue,

IHC: human endometrial cancer tissue,

IF/ICC: HepG2 cells,

Background Information

MBD3 does not bind DNA by itself. It recruits histone deacetylases and DNA methyltransferases. MBD3 acts as transcriptional repressor and plays a role in gene silencing.(PMID:9774669).

Notable Publications

Author	Pubmed ID	Journal	Application
Shanshan Li	33014158	Oncol Lett	WB,ChIP
Xiao-Hui Wang	34103526	Nat Commun	WB
Mei-Rong Liang	31313936	Genet Test Mol Biomarkers	WB

Storage

Storage:

Store at -20°C. Stable for one year after shipment.

Storage Buffer:

PBS with 0.02% sodium azide and 50% glycerol pH 7.3.

Aliquoting is unnecessary for -20°C storage

*** 20ul sizes contain 0.1% BSA

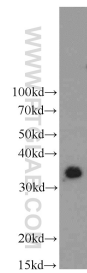
For technical support and original validation data for this product please contact:

T: 1 (888) 4PTGLAB (1-888-478-4522) (toll free in USA), or 1(312) 455-8498 (outside USA)

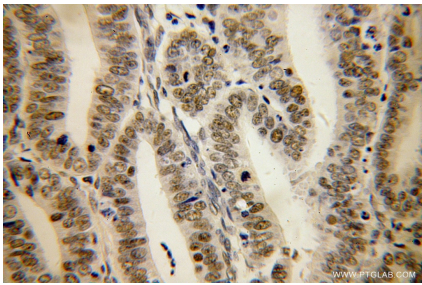
E: proteintech@ptglab.com
W: ptglab.com

This product is exclusively available under Proteintech Group brand and is not available to purchase from any other manufacturer.

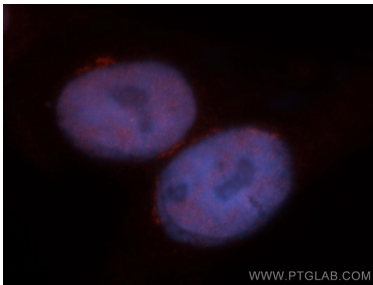
Selected Validation Data



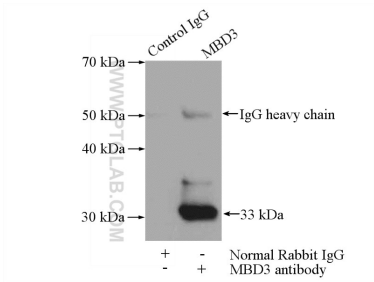
Y79 cells were subjected to SDS PAGE followed by western blot with 14258-1-AP (MBD3 antibody) at dilution of 1:600 incubated at room temperature for 1.5 hours.



Immunohistochemical analysis of paraffin-embedded human endometrial cancer using 14258-1-AP (MBD3 antibody) at dilution of 1:100 (under 40x lens).



Immunofluorescent analysis of HepG2 cells, using MBD3 antibody 14258-1-AP at 1:50 dilution and Rhodamine-labeled goat anti-rabbit IgG (red). Blue pseudocolor = DAPI (fluorescent DNA dye).



IP result of anti-MBD3 (IP:14258-1-AP, 4ug; Detection:14258-1-AP 1:800) with mouse testis tissue lysate 4000ug.