

For Research Use Only

# ARHGDIG Polyclonal ANTIBODY



Catalog Number: 14282-1-AP

## Basic Information

**Catalog Number:**

14282-1-AP

**Size:**

150UL, Concentration: 433 µg/ml by Bradford method using BSA as the standard;

**Source:**

Rabbit

**Isotype:**

IgG

**Immunogen Catalog Number:**

AG5554

**GenBank Accession Number:**

BC047699

**GeneID (NCBI):**

398

**Full Name:**

Rho GDP dissociation inhibitor (GDI)  
gamma

**Calculated MW:**

25 kDa

**Observed MW:**

25 kDa

**Purification Method:**

Antigen affinity purification

**Recommended Dilutions:**

WB 1:500-1:2000

IHC 1:20-1:200

## Applications

**Tested Applications:**

IHC, WB, ELISA

**Species Specificity:**

human, mouse, rat

**Note-IHC: suggested antigen retrieval with TE buffer pH 9.0; (\*) Alternatively, antigen retrieval may be performed with citrate buffer pH 6.0**

**Positive Controls:**

WB: HEK-293 cells, human brain tissue, MCF-7 cells, Jurkat cells, HeLa cells, HEK-293 cells

IHC: human pancreas cancer tissue,

## Background Information

### Storage

**Storage:**

Store at -20°C. Stable for one year after shipment.

**Storage Buffer:**

PBS with 0.02% sodium azide and 50% glycerol pH 7.3.

Aliquoting is unnecessary for -20°C storage

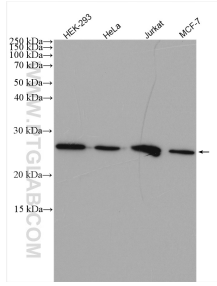
For technical support and original validation data for this product please contact:

T: 1 (888) 4PTGLAB (1-888-478-4522) (toll free in USA), or 1(312) 455-8498 (outside USA)

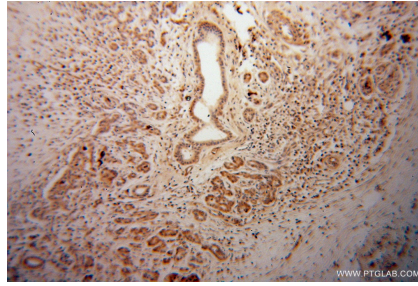
E: [proteintech@ptglab.com](mailto:proteintech@ptglab.com)  
W: [ptglab.com](http://ptglab.com)

**This product is exclusively available under Proteintech Group brand and is not available to purchase from any other manufacturer.**

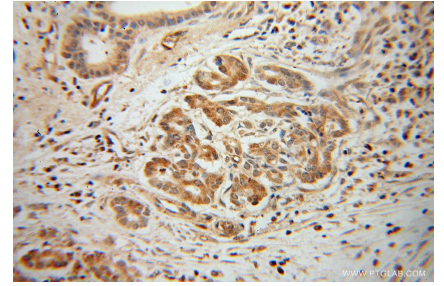
## Selected Validation Data



Various lysates were subjected to SDS PAGE followed by western blot with 14282-1-AP (ARHGDI G antibody) at dilution of 1:1000 incubated at room temperature for 1.5 hours.



Immunohistochemical analysis of paraffin-embedded human pancreas cancer using 14282-1-AP (ARHGDI G antibody) at dilution of 1:100 (under 10x lens).



Immunohistochemical analysis of paraffin-embedded human pancreas cancer using 14282-1-AP (ARHGDI G antibody) at dilution of 1:100 (under 40x lens).