

For Research Use Only

WASL Polyclonal antibody

Catalog Number: 14306-1-AP **4 Publications**



Basic Information

Catalog Number: 14306-1-AP	GenBank Accession Number: BC052955	Purification Method: Antigen affinity purification
Size: 150ul , Concentration: 300 µg/ml by Nanodrop and 260 µg/ml by Bradford method using BSA as the standard;	GeneID (NCBI): 8976	Recommended Dilutions: WB 1:500-1:2000 IHC 1:20-1:200 IF 1:10-1:100
Source: Rabbit	Full Name: Wiskott-Aldrich syndrome-like	
Isotype: IgG	Calculated MW: 55 kDa	
Immunogen Catalog Number: AG5424	Observed MW: 55 kDa	

Applications

Tested Applications: IF, IHC, WB, ELISA	Positive Controls: WB : mouse brain tissue, IHC : human brain tissue, IF : HepG2 cells,
Cited Applications: IF, WB	
Species Specificity: human, mouse, rat	
Cited Species: human	
Note-IHC: suggested antigen retrieval with TE buffer pH 9.0; (*) Alternatively, antigen retrieval may be performed with citrate buffer pH 6.0	

Background Information

Notable Publications

Author	Pubmed ID	Journal	Application
Hsu Chih-Chin CC	23622765	J Dermatol Sci	WB
Lei He	30702192	Cell Microbiol	WB
Joanna R Kovalski	30639242	Mol Cell	IF

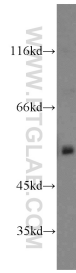
Storage

Storage:
Store at -20°C. Stable for one year after shipment.
Storage Buffer:
PBS with 0.02% sodium azide and 50% glycerol pH 7.3.
Aliquoting is unnecessary for -20°C storage

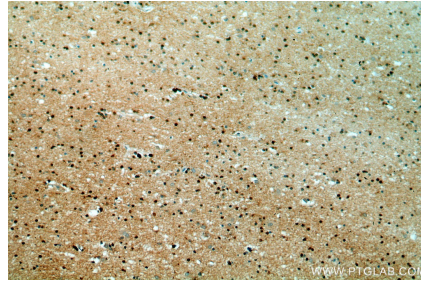
For technical support and original validation data for this product please contact:
T: 1 (888) 4PTGLAB (1-888-478-4522) (toll free in USA), or 1(312) 455-8498 (outside USA)
E: proteintech@ptglab.com
W: ptglab.com

This product is exclusively available under Proteintech Group brand and is not available to purchase from any other manufacturer.

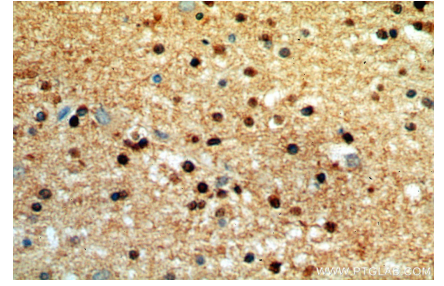
Selected Validation Data



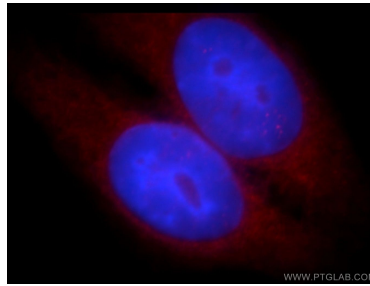
mouse brain tissue were subjected to SDS PAGE followed by western blot with 14306-1-AP (WASL antibody) at dilution of 1:500 incubated at room temperature for 1.5 hours.



Immunohistochemical analysis of paraffin-embedded human brain using 14306-1-AP (WASL antibody) at dilution of 1:50 (under 10x lens).



Immunohistochemical analysis of paraffin-embedded human brain using 14306-1-AP (WASL antibody) at dilution of 1:50 (under 40x lens).



Immunofluorescent analysis of HepG2 cells, using WASL antibody 14306-1-AP at 1:25 dilution and Rhodamine-labeled goat anti-rabbit IgG (red). Blue pseudocolor = DAPI (fluorescent DNA dye).