

For Research Use Only

CRCP Polyclonal antibody

Catalog Number: 14348-1-AP **6 Publications**



Basic Information

Catalog Number: 14348-1-AP	GenBank Accession Number: BC040107	Purification Method: Antigen affinity purification
Size: 150ul , Concentration: 473 µg/ml by Nanodrop and 267 µg/ml by Bradford method using BSA as the standard;	GeneID (NCBI): 27297	Recommended Dilutions: WB 1:1000-1:4000 IP 0.5-4.0 ug for IP and 1:500-1:2000 for WB
Source: Rabbit	Full Name: CGRP receptor component	Calculated MW: 17 kDa
Isotype: IgG	Observed MW: 20 kDa	IHC 1:20-1:200
Immunogen Catalog Number: AG5689		

Applications

Tested Applications: FC, IHC, IP, WB, ELISA	Positive Controls: WB : Raji cells, HeLa cells, human testis tissue, MCF-7 cells
Cited Applications: IF, WB	IP : Raji cells,
Species Specificity: human, mouse, rat	IHC : human testis tissue,
Cited Species: human, mouse, rat	

Note-IHC: suggested antigen retrieval with TE buffer pH 9.0; (*) Alternatively, antigen retrieval may be performed with citrate buffer pH 6.0

Background Information

Notable Publications

Author	Pubmed ID	Journal	Application
Qi An	34020664	J Neuroinflammation	IF
Rui Shi	35317822	J Transl Med	WB
Tingjiao Liu	34296452	Cell Biochem Funct	IF

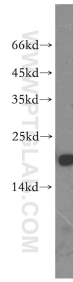
Storage

Storage:
Store at -20°C. Stable for one year after shipment.
Storage Buffer:
PBS with 0.02% sodium azide and 50% glycerol pH 7.3.
Aliquoting is unnecessary for -20°C storage

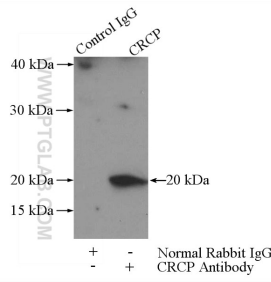
For technical support and original validation data for this product please contact:
T: 1 (888) 4PTGLAB (1-888-478-4522) (toll free in USA), or 1(312) 455-8498 (outside USA)
E: proteintech@ptglab.com
W: ptglab.com

This product is exclusively available under Proteintech Group brand and is not available to purchase from any other manufacturer.

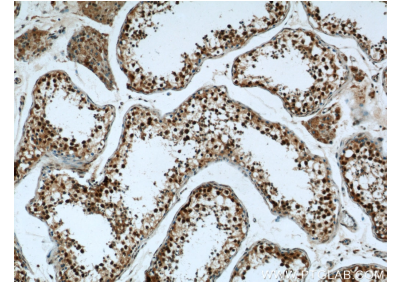
Selected Validation Data



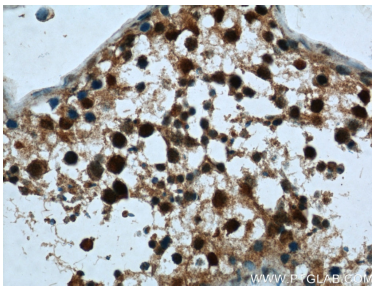
Raji cells were subjected to SDS PAGE followed by western blot with 14348-1-AP (CRCP antibody) at dilution of 1:1000 incubated at room temperature for 1.5 hours.



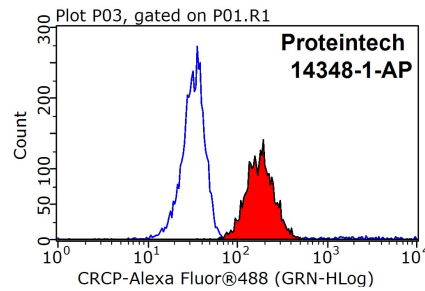
IP Result of anti-CRCP (IP:14348-1-AP, 3ug; Detection:14348-1-AP 1:1000) with Raji cells lysate 2800ug.



Immunohistochemical analysis of paraffin-embedded human testis tissue slide using 14348-1-AP (CRCP Antibody) at dilution of 1:50 (under 10x lens).



Immunohistochemical analysis of paraffin-embedded human testis tissue slide using 14348-1-AP (CRCP Antibody) at dilution of 1:50 (under 40x lens).



1X10⁶ Raji cells were stained with 0.2ug CRCP antibody (14348-1-AP, red) and control antibody (blue). Fixed with 90% MeOH blocked with 3% BSA (30 min). Alexa Fluor 488-conjugated AffiniPure Goat Anti-Rabbit IgG(H+L) with dilution 1:1000.