

For Research Use Only

BPI Polyclonal antibody

Catalog Number: 14368-1-AP



Basic Information

Catalog Number:

14368-1-AP

Size:

150ul , Concentration: 160 µg/ml by Nanodrop and 160 µg/ml by Bradford method using BSA as the standard;

Source:

Rabbit

Isotype:

IgG

Immunogen Catalog Number:

AG5695

GenBank Accession Number:

BC040955

GeneID (NCBI):

671

Full Name:

bactericidal/permeability-increasing protein

Calculated MW:

54 kDa

Purification Method:

Antigen affinity purification

Recommended Dilutions:

IF 1:10-1:100

Applications

Tested Applications:

IF, ELISA

Species Specificity:

human

Positive Controls:

IF : HepG2 cells,

Background Information

Storage

Storage:

Store at -20°C. Stable for one year after shipment.

Storage Buffer:

PBS with 0.02% sodium azide and 50% glycerol pH 7.3.

Aliquoting is unnecessary for -20°C storage

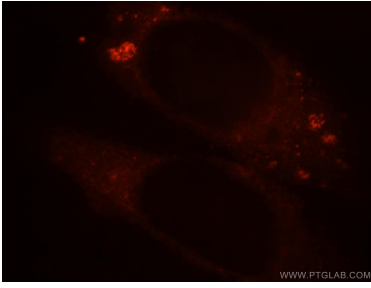
For technical support and original validation data for this product please contact:

T: 1 (888) 4PTGLAB (1-888-478-4522) (toll free in USA), or 1(312) 455-8498 (outside USA)

E: proteintech@ptglab.com
W: ptglab.com

This product is exclusively available under Proteintech Group brand and is not available to purchase from any other manufacturer.

Selected Validation Data



Immunofluorescent analysis of HepG2 cells, using BPI antibody 14368-1-AP at 1:25 dilution and Rhodamine-labeled goat anti-rabbit IgG (red).