

For Research Use Only

SCP2/SCPx Polyclonal antibody

Catalog Number: 14397-1-AP

Featured Product

4 Publications



Basic Information

Catalog Number:

14397-1-AP

Size:

150ul, Concentration: 600 ug/ml by Nanodrop and 267 ug/ml by Bradford method using BSA as the standard;

Source:

Rabbit

Isotype:

IgG

Immunogen Catalog Number:

AG5895

GenBank Accession Number:

BC067108

GeneID (NCBI):

6342

UNIPROT ID:

P22307

Full Name:

sterol carrier protein 2

Calculated MW:

59 kDa

Observed MW:

44-46 kDa, 58 kDa

Purification Method:

Antigen affinity purification

Recommended Dilutions:

WB: 1:300-1:1500

IHC: 1:50-1:500

IF/ICC: 1:10-1:100

Applications

Tested Applications:

WB, IHC, IF/ICC, ELISA

Cited Applications:

WB

Species Specificity:

human, mouse, rat

Cited Species:

human, mouse, rat

Note-IHC: suggested antigen retrieval with TE buffer pH 9.0; (*) Alternatively, antigen retrieval may be performed with citrate buffer pH 6.0

Positive Controls:

WB: A549 cells, BxPC-3 cells, HepG2 cells, NIH/3T3 cells

IHC: human stomach tissue,

IF/ICC: BxPC-3 cells,

Background Information

SCP2 (Sterol carrier protein-2), also called nonspecific lipid-transfer protein, is thought to play a major role in intracellular lipid transport and metabolism. Mutations of SCP2 have been associated with diseases involving abnormalities in lipid trafficking, such as Zellweger syndrome. The alternative splicing generates 58 kDa SCPx and 13-15 kDa SCP2 proteins, both of which contain a C-terminal SCP2 domain. In addition to the SCP2 domain, SCPx also contains an amino-terminal thiolase domain. The proteolytic cleavage of SCPx occurred when it was imported into peroxisomes, giving rise to a 44-46 kDa thiolase and a 13-15 kDa SCP2. 14397-1-AP antibody recognizes the intact 58 kDa SCPx protein as well as 44-46 kDa thiolase (PMID: 35996156).

Notable Publications

Author	Pubmed ID	Journal	Application
Wanxin Guo	40280135	Dev Cell	WB
Xue Chen	38790950	Biomedicines	WB
Vanessa Goyon	37962001	EMBO Rep	WB

Storage

Storage:

Store at -20°C. Stable for one year after shipment.

Storage Buffer:

PBS with 0.02% sodium azide and 50% glycerol, pH7.3

Aliquoting is unnecessary for -20°C storage

*** 20ul sizes contain 0.1% BSA

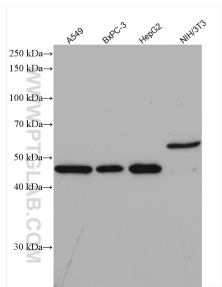
For technical support and original validation data for this product please contact:

T: 1 (888) 4PTGLAB (1-888-478-4522) (toll free in USA), or 1(312) 455-8498 (outside USA)

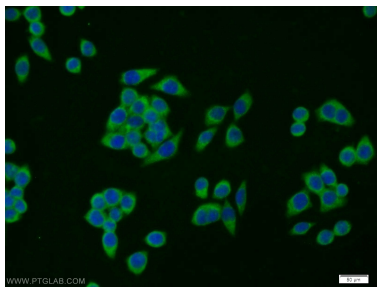
E: proteintech@ptglab.com
W: ptglab.com

This product is exclusively available under Proteintech Group brand and is not available to purchase from any other manufacturer.

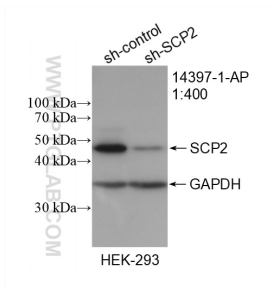
Selected Validation Data



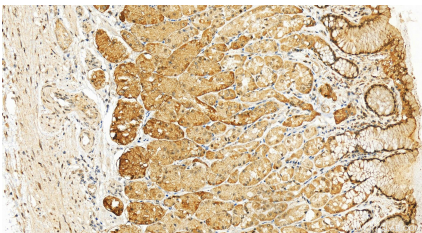
Various lysates were subjected to SDS PAGE followed by western blot with 14397-1-AP (SCP2/SCPx antibody) at dilution of 1:1000 incubated at room temperature for 1.5 hours.



Immunofluorescent analysis of BxPC-3 cells using 14397-1-AP (SCP2 antibody) at dilution of 1:25 and Alexa Fluor 488-conjugated AffiniPure Goat Anti-Rabbit IgG(H+L).



WB result of SCP2/SCPx antibody (14397-1-AP; 1:400; incubated at room temperature for 1.5 hours) with sh-Control and sh-SCP2/SCPx transfected HEK-293 cells.



Immunohistochemical analysis of paraffin-embedded human stomach tissue slide using 14397-1-AP (SCP2/SCPx antibody) at dilution of 1:200 (under 20x lens). Heat mediated antigen retrieval with Tris-EDTA buffer (pH 9.0).