

For Research Use Only

RBM10 Polyclonal antibody

Catalog Number: 14423-1-AP

Featured Product

11 Publications



Basic Information

Catalog Number:

14423-1-AP

Size:

150ul, Concentration: 850 ug/ml by Nanodrop and 420 ug/ml by Bradford method using BSA as the standard;

Source:

Rabbit

Isotype:

IgG

Immunogen Catalog Number:

AG5788

GenBank Accession Number:

BC024153

GeneID (NCBI):

8241

UNIPROT ID:

P98175

Full Name:

RNA binding motif protein 10

Calculated MW:

104 kDa

Observed MW:

115 kDa

Purification Method:

Antigen affinity purification

Recommended Dilutions:

WB: 1:500-1:2000

IP: 0.5-4.0 ug for 1.0-3.0 mg of total protein lysate

IF-P: 1:50-1:500

Applications

Tested Applications:

WB, IF-P, IP, ELISA

Cited Applications:

WB, IHC, IF, IP, CoIP, RIP

Species Specificity:

human, mouse, rat

Cited Species:

human

Positive Controls:

WB: human brain tissue,

IP: mouse brain tissue,

IF-P: mouse brain tissue,

Background Information

RBM10, also named as RNA-binding protein 10, is a 930 amino acid protein, which is in the extranuclear nucleoplasm constitutes hundreds of nuclear domains, which dynamically change their structures in a reversible manner. RBM10 may be involved in post-transcriptional processing, most probably in mRNA splicing. RBM10 has some isoforms with MV 100-130 kDa (PMID: 25889998 and PMID: 18315527).

Notable Publications

Author	Pubmed ID	Journal	Application
Ji Hoon Jung	31591476	Oncogene	WB
Shan Cong	36335386	Cancer Cell Int	WB, RIP, IHC
Leslie C Sutherland	28728573	BMC Mol Biol	WB

Storage

Storage:

Store at -20°C. Stable for one year after shipment.

Storage Buffer:

PBS with 0.02% sodium azide and 50% glycerol, pH7.3

Aliquoting is unnecessary for -20°C storage

*** 20ul sizes contain 0.1% BSA

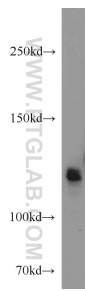
For technical support and original validation data for this product please contact:

T: 1 (888) 4PTGLAB (1-888-478-4522) (toll free in USA), or 1(312) 455-8498 (outside USA)

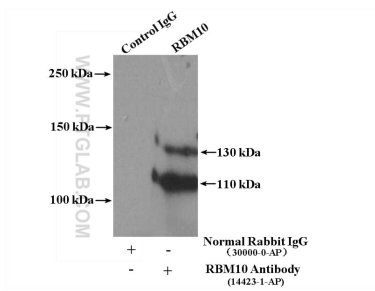
E: proteintech@ptglab.com
W: ptglab.com

This product is exclusively available under Proteintech Group brand and is not available to purchase from any other manufacturer.

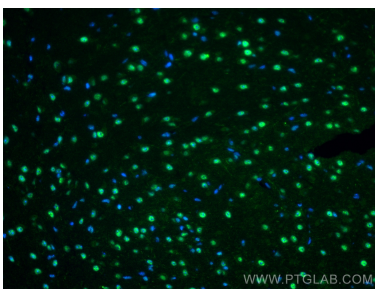
Selected Validation Data



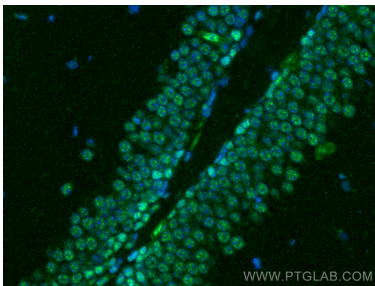
human brain tissue were subjected to SDS PAGE followed by western blot with 14423-1-AP (RBM10 antibody) at dilution of 1:1000 incubated at room temperature for 1.5 hours.



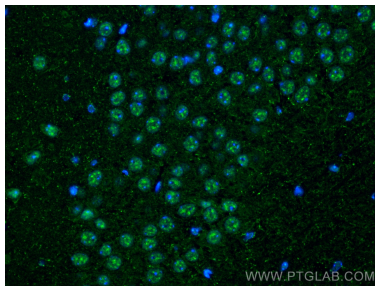
IP result of anti-RBM10 (IP:14423-1-AP, 4ug; Detection:14423-1-AP 1:800) with mouse brain tissue lysate 4000ug.



Immunofluorescent analysis of (4% PFA) fixed mouse brain tissue using RBM10 antibody (14423-1-AP) at dilution of 1:200 and CoraLite®488-Conjugated AffiniPure Goat Anti-Rabbit IgG(H+L).



Immunofluorescent analysis of (4% PFA) fixed mouse brain tissue using RBM10 antibody (14423-1-AP) at dilution of 1:200 and CoraLite®488-Conjugated AffiniPure Goat Anti-Rabbit IgG(H+L).



Immunofluorescent analysis of (4% PFA) fixed mouse brain tissue using RBM10 antibody (14423-1-AP) at dilution of 1:200 and CoraLite®488-Conjugated AffiniPure Goat Anti-Rabbit IgG(H+L).