

For Research Use Only

KDM5C Polyclonal antibody

Catalog Number: 14426-1-AP **2 Publications**



Basic Information

Catalog Number: 14426-1-AP	GenBank Accession Number: BC054499	Purification Method: Antigen affinity purification
Size: 150ul , Concentration: 350 µg/ml by Nanodrop and 220 µg/ml by Bradford method using BSA as the standard;	GeneID (NCBI): 8242	Recommended Dilutions: WB 1:500-1:1000 IF 1:50-1:500
Source: Rabbit	Full Name: lysine (K)-specific demethylase 5C	
Isotype: IgG	Calculated MW: 176 kDa	
Immunogen Catalog Number: AG5791	Observed MW: 171-180 kDa	

Applications

Tested Applications: IF, WB, ELISA	Positive Controls: WB : HeLa cells, IF : HeLa cells,
Cited Applications: WB	
Species Specificity: human, mouse, rat	
Cited Species: human	

Background Information

KDM5C belongs to the ARID protein family that harbors conserved DNA-binding motifs and acts as a histone H3 lysine 4 demethylase, suggesting a potential role in epigenetic regulation during development, cell differentiation (PMID:21575681). KDM5C protein is homologous to three other proteins of the human JARID1 family (JARID1A, JARID1B and JARID1C). This family shares several evolutionarily conserved domains, including the catalytic JmjC domain, JmjN domain, Arid/Bright domain, C5HC2 zinc-finger domain and two plant homeodomains (PHD), a motif that binds methyl-lysine residues (PMID:17320160,17320161).

Notable Publications

Author	Pubmed ID	Journal	Application
Shi-Ting Li	32694775	Nat Metab	WB
Wenxia Xu	29989047	Int J Biol Sci	WB

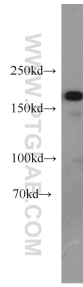
Storage

Storage:
Store at -20°C. Stable for one year after shipment.
Storage Buffer:
PBS with 0.02% sodium azide and 50% glycerol pH 7.3.
Aliquoting is unnecessary for -20°C storage

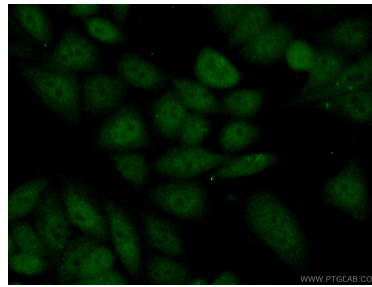
For technical support and original validation data for this product please contact:
T: 1 (888) 4PTGLAB (1-888-478-4522) (toll free in USA), or 1(312) 455-8498 (outside USA)
E: proteintech@ptglab.com
W: ptglab.com

This product is exclusively available under Proteintech Group brand and is not available to purchase from any other manufacturer.

Selected Validation Data



HeLa cells were subjected to SDS PAGE followed by western blot with 14426-1-AP (KDM5C antibody) at dilution of 1:500 incubated at room temperature for 1.5 hours.



Immunofluorescent analysis of (10% Formaldehyde) fixed HeLa cells using 14426-1-AP (KDM5C antibody) at dilution of 1:50 and Alexa Fluor 488-conjugated AffiniPure Goat Anti-Rabbit IgG(H+L).