

For Research Use Only

TSHR Polyclonal ANTIBODY



Catalog Number: 14450-1-AP **7 Publications**

Basic Information

Catalog Number: 14450-1-AP	GenBank Accession Number: BC063613	Purification Method: Antigen affinity purification
Size: 150UL, Concentration: 233 µg/ml by Bradford method using BSA as the standard;	GeneID (NCBI): 7253	Recommended Dilutions: WB 1:500-1:2000
Source: Rabbit	Full Name: thyroid stimulating hormone receptor	
Isotype: IgG	Calculated MW: 87 kDa	
Immunogen Catalog Number: AG5957	Observed MW: 62-70 kDa	

Applications

Tested Applications: WB, ELISA	Positive Controls: WB: HeLa cells, mouse ovary tissue, mouse thymus tissue
Cited Applications: WB	
Species Specificity: human, mouse	
Cited Species: human	

Background Information

Thyroid stimulating hormone (also known as thyrotropin or TSH) is a glycoprotein hormone produced by thyrotrophs in the anterior pituitary gland. The TSH receptor (TSHR), mainly expressed on the thyroid epithelial cells, is a G protein-coupled receptor (GPCR) of the seven-transmembrane domain family and plays a central role in controlling thyroid cell metabolism. The gene of TSHR maps to chromosome 14q31.1, and encodes a 764-amino acid protein with a predicted unmodified molecular weight of 86.8 kDa. The apparent molecular weight of glycosylated form is 95-120 kDa. Studies reveal that TSHR is composed of two subunits, A and B, which are produced by cleavage of single-chain TSHR on the cell surface and subsequently connected by disulfide bonds. This rabbit polyclonal antibody raised against N-terminal region (1-253 aa) of human TSHR can detect subunit A with an experimentally determined molecular weight of 62-70 kDa under reducing condition. (PMID: 20578897, 17158770, 12593718)

Notable Publications

Author	Pubmed ID	Journal	Application
Jianlu Song	30323976	Am J Cancer Res	WB
Dilidaer Muhanhali	30038597	Front Endocrinol (Lausanne)	WB
Xinxin Chen	29976201	J Transl Med	WB

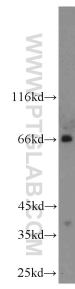
Storage

Storage:
Store at -20°C. Stable for one year after shipment.
Storage Buffer:
PBS with 0.02% sodium azide and 50% glycerol pH 7.3.
Aliquoting is unnecessary for -20°C storage

For technical support and original validation data for this product please contact:
T: 1 (888) 4PTGLAB (1-888-478-4522) (toll free in USA), or 1(312) 455-8498 (outside USA)
E: proteintech@ptglab.com
W: ptglab.com

This product is exclusively available under Proteintech Group brand and is not available to purchase from any other manufacturer.

Selected Validation Data



HeLa cells were subjected to SDS PAGE followed by western blot with 14450-1-AP (TSHR antibody) at dilution of 1:1000 incubated at room temperature for 1.5 hours.