

For Research Use Only

FECH Polyclonal antibody

Catalog Number: 14466-1-AP **11 Publications**



Basic Information

Catalog Number: 14466-1-AP	GenBank Accession Number: BC039841	Purification Method: Antigen affinity purification
Size: 150ul , Concentration: 200 µg/ml by Nanodrop and 180 µg/ml by Bradford method using BSA as the standard;	GeneID (NCBI): 2235	Recommended Dilutions: WB 1:500-1:2000 IHC 1:100-1:400
Source: Rabbit	Full Name: ferrochelatase (protoporphyrin)	
Isotype: IgG	Calculated MW: 48 kDa	
Immunogen Catalog Number: AG5814	Observed MW: 40-48 kDa	

Applications

Tested Applications: IHC, WB, ELISA	Positive Controls: WB : K-562 cells, human liver tissue, HepG2 cells, human heart tissue, mouse heart tissue IHC : human heart tissue,
Cited Applications: WB	
Species Specificity: human, mouse, rat	
Cited Species: human, mouse, rat	
Note-IHC: suggested antigen retrieval with TE buffer pH 9.0; (*) Alternatively, antigen retrieval may be performed with citrate buffer pH 6.0	

Background Information

FECH(ferrochelatase, mitochondrial) is also named as heme synthase, protoheme ferro-lyase and belongs to the ferrochelatase family. It is a homodimeric (86 kDa) mitochondrial membrane-associated enzyme that catalyzes the insertion of ferrous iron into protoporphyrin to form heme(PMID:11175906). It has 2 isoforms produced by alternative splicing and the full length protein has a transit peptide with 54 amino acids.

Notable Publications

Author	Pubmed ID	Journal	Application
Ying Wang	34707288	Nature	WB
Andrew J Schwartz	34155415	Nat Metab	WB
Michelle Grace Acoba	33730581	Cell Rep	WB

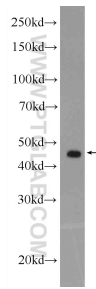
Storage

Storage:
Store at -20°C. Stable for one year after shipment.
Storage Buffer:
PBS with 0.02% sodium azide and 50% glycerol pH 7.3.
Aliquoting is unnecessary for -20°C storage

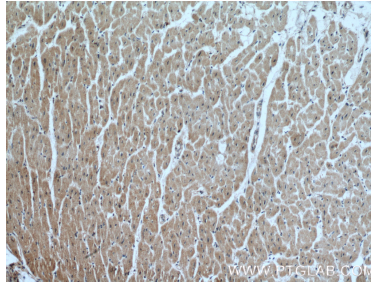
For technical support and original validation data for this product please contact:
T: 1 (888) 4PTGLAB (1-888-478-4522) (toll free in USA), or 1(312) 455-8498 (outside USA)
E: proteintech@ptglab.com
W: ptglab.com

This product is exclusively available under Proteintech Group brand and is not available to purchase from any other manufacturer.

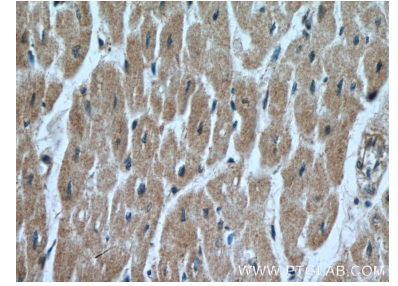
Selected Validation Data



K-562 cells were subjected to SDS PAGE followed by western blot with 14466-1-AP (FECH Antibody) at dilution of 1:1000 incubated at room temperature for 1.5 hours.



Immunohistochemical analysis of paraffin-embedded human heart tissue slide using 14466-1-AP (FECH Antibody) at dilution of 1:200 (under 10x lens).



Immunohistochemical analysis of paraffin-embedded human heart tissue slide using 14466-1-AP (FECH Antibody) at dilution of 1:200 (under 40x lens).