

For Research Use Only

# GSTM5 Polyclonal antibody

Catalog Number: 14502-1-AP

Featured Product

4 Publications



## Basic Information

### Catalog Number:

14502-1-AP

### Size:

150ul, Concentration: 700 ug/ml by Nanodrop;

### Source:

Rabbit

### Isotype:

IgG

### Immunogen Catalog Number:

AG5958

### GenBank Accession Number:

BC058881

### GeneID (NCBI):

2949

### UNIPROT ID:

P46439

### Full Name:

glutathione S-transferase mu 5

### Calculated MW:

26 kDa

### Observed MW:

26 kDa

### Purification Method:

Antigen affinity purification

### Recommended Dilutions:

WB 1:2000-1:12000

IP 0.5-4.0 ug for 1.0-3.0 mg of total protein lysate

IHC 1:20-1:200

IF/ICC 1:200-1:800

## Applications

### Tested Applications:

WB, IHC, IF/ICC, IP, ELISA

### Cited Applications:

WB, IHC, IF

### Species Specificity:

human, mouse, rat

### Cited Species:

human, mouse, rat

**Note-IHC: suggested antigen retrieval with TE buffer pH 9.0; (\*) Alternatively, antigen retrieval may be performed with citrate buffer pH 6.0**

### Positive Controls:

**WB** : HeLa cells, rat skeletal muscle tissue, mouse testis

**IP** : mouse skeletal muscle tissue,

**IHC** : human heart tissue,

**IF/ICC** : HepG2 cells,

## Background Information

GSTM5 belongs to the GST superfamily that metabolizes a broad range of xenobiotics and carcinogens. GSTM5 is expressed in brain, testis, lung and a lesser extent in heart.

## Notable Publications

Author	Pubmed ID	Journal	Application
Linlin Yang	35830924	J Proteomics	WB
Takayuki Nakajima	26342941	J Neurol Sci	WB, IHC, IF
Yunyi Nan	38702323	Cell Death Discov	WB, IHC, IF

## Storage

### Storage:

Store at -20°C. Stable for one year after shipment.

### Storage Buffer:

PBS with 0.02% sodium azide and 50% glycerol pH 7.3.

Aliquoting is unnecessary for -20°C storage

\*\*\* 20ul sizes contain 0.1% BSA

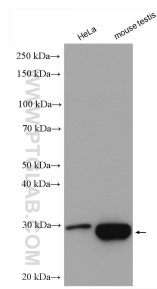
For technical support and original validation data for this product please contact:

T: 1 (888) 4PTGLAB (1-888-478-4522) (toll free in USA), or 1(312) 455-8498 (outside USA)

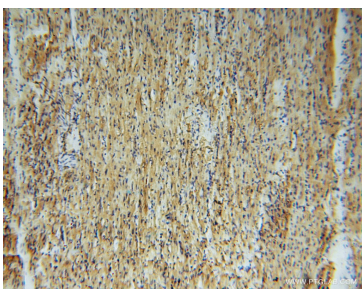
E: [proteintech@ptglab.com](mailto:proteintech@ptglab.com)  
W: [ptglab.com](http://ptglab.com)

This product is exclusively available under Proteintech Group brand and is not available to purchase from any other manufacturer.

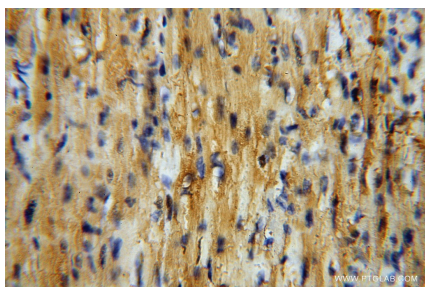
Selected Validation Data



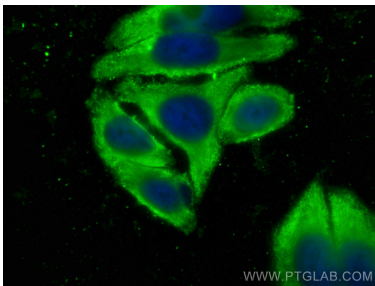
Various lysates were subjected to SDS PAGE followed by western blot with 14502-1-AP (GSTM5 antibody) at dilution of 1:6000 incubated at room temperature for 1.5 hours.



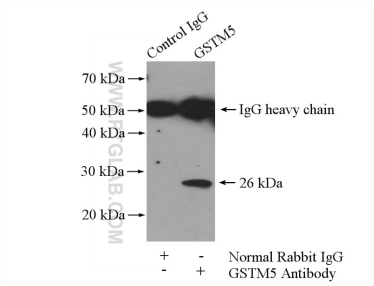
Immunohistochemical analysis of paraffin-embedded human heart using 14502-1-AP (GSTM5 antibody) at dilution of 1:50 (under 10x lens).



Immunohistochemical analysis of paraffin-embedded human heart using 14502-1-AP (GSTM5 antibody) at dilution of 1:50 (under 40x lens).



Immunofluorescent analysis of (-20°C Ethanol) fixed HepG2 cells using GSTM5 antibody (14502-1-AP) at dilution of 1:400 and Multi-rAb CoraLite® Plus 488-Goat Anti-Rabbit Recombinant Secondary Antibody (H+L) (RGAR002).



IP result of anti-GSTM5 (IP:14502-1-AP, 4ug; Detection:14502-1-AP 1:600) with mouse skeletal muscle tissue lysate 4000ug.