

For Research Use Only

CARD8 Polyclonal antibody

Catalog Number: 14516-1-AP



Basic Information

Catalog Number: 14516-1-AP	GenBank Accession Number: BC056891	Purification Method: Antigen affinity purification
Size: 150ul , Concentration: 260 µg/ml by Nanodrop and 193 µg/ml by Bradford method using BSA as the standard;	GeneID (NCBI): 22900	Recommended Dilutions: IHC 1:20-1:200 IF 1:20-1:200
Source: Rabbit	Full Name: caspase recruitment domain family, member 8	
Isotype: IgG	Calculated MW: 49 kDa	
Immunogen Catalog Number: AG5975		

Applications

Tested Applications: IF, IHC, ELISA	Positive Controls: IHC : human ovary tumor tissue, IF : HepG2 cells,
Species Specificity: human	
Note-IHC: suggested antigen retrieval with TE buffer pH 9.0; (*) Alternatively, antigen retrieval may be performed with citrate buffer pH 6.0	

Background Information

Storage

Storage:
Store at -20°C. Stable for one year after shipment.
Storage Buffer:
PBS with 0.02% sodium azide and 50% glycerol pH 7.3.
Aliquoting is unnecessary for -20°C storage

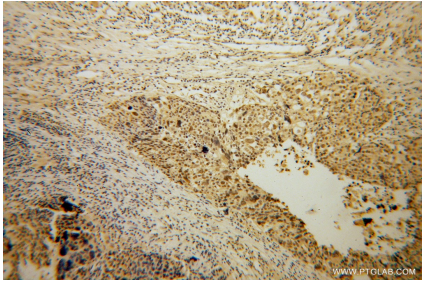
For technical support and original validation data for this product please contact:

T: 1 (888) 4PTGLAB (1-888-478-4522) (toll free in USA), or 1(312) 455-8498 (outside USA)

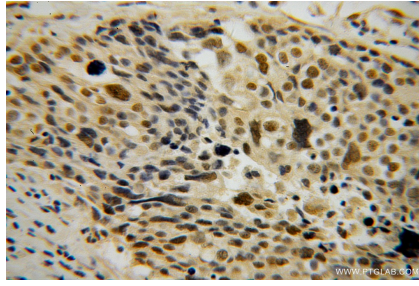
E: proteintech@ptglab.com
W: ptglab.com

This product is exclusively available under Proteintech Group brand and is not available to purchase from any other manufacturer.

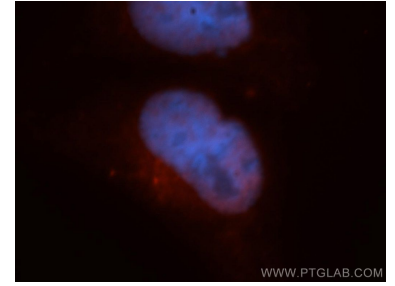
Selected Validation Data



Immunohistochemical analysis of paraffin-embedded human ovary tumor using 14516-1-AP (CARD8 antibody) at dilution of 1:50 (under 10x lens).



Immunohistochemical analysis of paraffin-embedded human ovary tumor using 14516-1-AP (CARD8 antibody) at dilution of 1:50 (under 40x lens).



Immunofluorescent analysis of HepG2 cells, using CARD8 antibody 14516-1-AP at 1:50 dilution and Rhodamine-labeled goat anti-rabbit IgG (red). Blue pseudocolor = DAPI (fluorescent DNA dye).