

For Research Use Only

# CRMP2 Polyclonal antibody

Catalog Number: 14521-1-AP

1 Publications



## Basic Information

<b>Catalog Number:</b> 14521-1-AP	<b>GenBank Accession Number:</b> BC067109	<b>Purification Method:</b> Antigen affinity purification
<b>Size:</b> 150ul , Concentration: 400 ug/ml by Nanodrop;	<b>GeneID (NCBI):</b> 1808	<b>Recommended Dilutions:</b> WB 1:500-1:2000 IHC 1:50-1:500
<b>Source:</b> Rabbit	<b>UNIPROT ID:</b> Q16555	
<b>Isotype:</b> IgG	<b>Full Name:</b> dihydropyrimidinase-like 2	
<b>Immunogen Catalog Number:</b> AG5987	<b>Calculated MW:</b> 62 kDa	
	<b>Observed MW:</b> 62 kDa	

## Applications

<b>Tested Applications:</b> WB, IHC, ELISA	<b>Positive Controls:</b>
<b>Cited Applications:</b> WB	<b>WB :</b> mouse brain tissue, mouse heart tissue, rat heart tissue
<b>Species Specificity:</b> human, mouse, rat	<b>IHC :</b> human colon cancer tissue,
<b>Cited Species:</b> human	
<b>Note-IHC: suggested antigen retrieval with TE buffer pH 9.0; (*) Alternatively, antigen retrieval may be performed with citrate buffer pH 6.0</b>	

## Background Information

Dihydropyrimidinase-like 2 (Dpysl2), a protein involved in neuronal differentiation and axonal guidance is found altered in various nervous system diseases (PMID:19524114). It is also named as CRMP2, ULIP2 and belongs to hydantoinase/dihydropyrimidinase subfamily. The phosphorylation of the particular portion carboxyl-terminal to the basic region of DPYSL2 may play an important role in regulating its activity, and may be involved in the formation of degenerating neurites in AD brain (PMID:10757975).

## Notable Publications

Author	Pubmed ID	Journal	Application
Yi-Sheng Li	27127481	Neural Regen Res	WB

## Storage

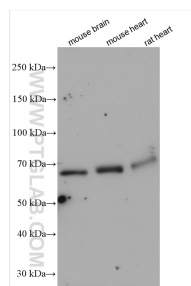
**Storage:**  
Store at -20°C. Stable for one year after shipment.  
**Storage Buffer:**  
PBS with 0.02% sodium azide and 50% glycerol, pH7.3  
Aliquoting is unnecessary for -20°C storage

\*\*\* 20ul sizes contain 0.1% BSA

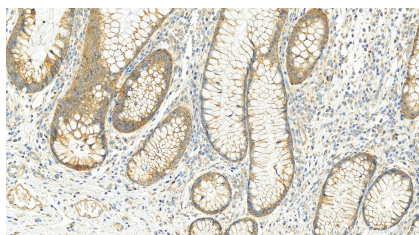
For technical support and original validation data for this product please contact:  
T: 1 (888) 4PTGLAB (1-888-478-4522) (toll free in USA), or 1(312) 455-8498 (outside USA)  
E: [proteintech@ptglab.com](mailto:proteintech@ptglab.com)  
W: [ptglab.com](http://ptglab.com)

This product is exclusively available under Proteintech Group brand and is not available to purchase from any other manufacturer.

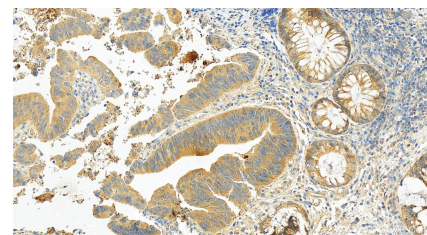
## Selected Validation Data



Various lysates were subjected to SDS PAGE followed by western blot with 14521-1-AP (CRMP2 antibody) at dilution of 1:1000 incubated at room temperature for 1.5 hours.



Immunohistochemical analysis of paraffin-embedded human colon cancer tissue slide using 14521-1-AP (CRMP2 antibody) at dilution of 1:200 (under 20x lens). Heat mediated antigen retrieval with Tris-EDTA buffer (pH 9.0).



Immunohistochemical analysis of paraffin-embedded human colon cancer tissue slide using 14521-1-AP (CRMP2 antibody) at dilution of 1:200 (under 20x lens). Heat mediated antigen retrieval with Tris-EDTA buffer (pH 9.0).