

For Research Use Only

MT1-MMP Polyclonal ANTIBODY



Catalog Number: 14552-1-AP

12 Publications

Basic Information

Catalog Number:
14552-1-AP

Size:
30 µg/150 µl

Source:
Rabbit

Isotype:
IgG

Purification Method:
Antigen affinity purification

Immunogen Catalog Number:
AG5965

GenBank Accession Number:
BC064803

GeneID (NCBI):
4323

Full Name:
matrix metalloproteinase 14 (membrane-inserted)

Calculated MW:
66 kDa

Observed MW:
66 kDa, 45-50 kDa

Recommended Dilutions:

WB 1:500-1:2000
IF 1:50-1:500

Applications

Tested Applications:

IF, WB, ELISA

Cited Applications:

IF, IHC, WB

Species Specificity:
human, mouse, rat, zebrafish

Cited Species:
human, mouse, rat

Positive Controls:

WB : HepG2 cells; A549 cells, COLO 320 cells,
human colon tissue

IF : HepG2 cells; COLO 320 cells

Background Information

MMP14, also named as MT1-MMP, is a key matrix metalloproteinase (MMP) family member which plays a crucial role in tumor growth, invasion and metastasis. MT1-MMP is a cell membrane-bound proteinase, and it enhances degradation of collagen IV, a major component of the basement membrane, by forming a complex with tissue inhibitor of metalloproteinase-2 (TIMP-2) to activate pro-MMP-2. MT1-MMP can influence venous invasion, intrahepatic metastasis, and patient outcome in hepatocellular carcinoma (HCC). MT1-MMP was reported to be present in centromere and could lead to chromosome instability in MDCK cells, indicating that MT1-MMP may have more novel functions in the intracellular compartments. In western blotting, pro-MMP14 (65 kDa) and MMP14 (51 kDa) bands showed with the truncated MMP14 (45, 42, 35, 20 kDa) forms (PMID:12097451).

Notable Publications

Author	Pubmed ID	Journal	Application
Junqing Guo	29499931	Mol Ther Nucleic Acids	WB
So-Young Choi	30893927	Cancers (Basel)	WB
Yue Li	28268166	Cancer Lett	WB

Storage

Storage:

Store at -20°C. Stable for one year after shipment.

Storage Buffer:

PBS with 0.02% sodium azide and 50% glycerol pH 7.3.

Aliquoting is unnecessary for -20°C storage

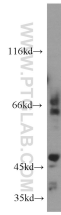
For technical support and original validation data for this product please contact:

T: 1 (888) 4PTGLAB (1-888-478-4522) (toll free in USA), or 1(312) 455-8498 (outside USA)

E: proteintech@ptglab.com
W: ptglab.com

This product is exclusively available under Proteintech Group brand and is not available to purchase from any other manufacturer.

Selected Validation Data



HepG2 cells were subjected to SDS PAGE followed by western blot with 14552-1-AP(MT1-MVP antibody) at dilution of 1:500 incubated at room temperature for 1.5 hours