

For Research Use Only

Alpha Tubulin Polyclonal antibody



Catalog Number: 14555-1-AP

4 Publications

Basic Information

Catalog Number:

14555-1-AP

Size:

150UL, Concentration: 307 µg/ml by Bradford method using BSA as the standard;

Source:

Rabbit

Isotype:

IgG

Immunogen Catalog Number:

AG6038

GenBank Accession Number:

BC050637

GeneID (NCBI):

7846

Full Name:

tubulin, alpha 1a

Calculated MW:

50 kDa

Observed MW:

50-55 kDa

Purification Method:

Antigen affinity purification

Recommended Dilutions:

WB 1:500-1:3000

IHC 1:250-1:1000

IF 1:10-1:100

Applications

Tested Applications:

IF, IHC, WB, ELISA

Cited Applications:

IF, WB

Species Specificity:

human, mouse, rat

Cited Species:

human

Note-IHC: suggested antigen retrieval with TE buffer pH 9.0; (*) Alternatively, antigen retrieval may be performed with citrate buffer pH 6.0

Positive Controls:

WB: mouse brain tissue, mouse cerebellum tissue

IHC: mouse testis tissue,

IF: HepG2 cells,

Background Information

Notable Publications

Author	Pubmed ID	Journal	Application
Mohamed Bourmoum	29724911	J Cell Sci	WB
Adel Al Fatease	31022465	Nanomedicine	WB
Shen Enzhi E	19331820	Exp Cell Res	WB, IF

Storage

Storage:

Store at -20°C. Stable for one year after shipment.

Storage Buffer:

PBS with 0.02% sodium azide and 50% glycerol pH 7.3.

Aliquoting is unnecessary for -20°C storage

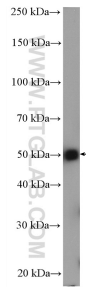
For technical support and original validation data for this product please contact:

T: 1 (888) 4PTGLAB (1-888-478-4522) (toll free in USA), or 1(312) 455-8498 (outside USA)

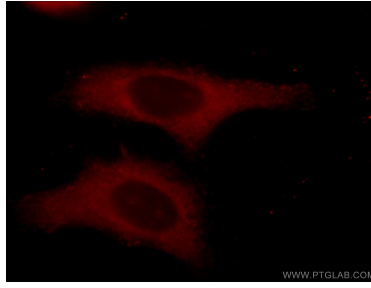
E: proteintech@ptglab.com
W: ptglab.com

This product is exclusively available under Proteintech Group brand and is not available to purchase from any other manufacturer.

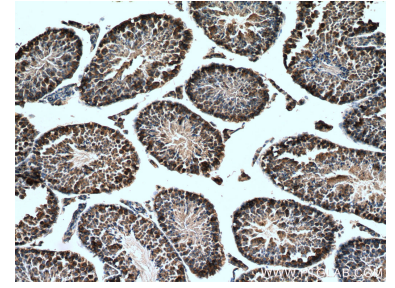
Selected Validation Data



mouse brain tissue were subjected to SDS PAGE followed by western blot with 14555-1-AP (alpha Tubulin antibody) at dilution of 1:1500 incubated at room temperature for 1.5 hours.



Immunofluorescent analysis of HepG2 cells using 14555-1-AP (alpha Tubulin antibody) at dilution of 1:25 and Rhodamine-Goat anti-Rabbit IgG.



Immunohistochemical analysis of paraffin-embedded mouse testis tissue slide using 14555-1-AP (Alpha Tubulin antibody) at dilution of 1:500 (under 10x Lens). Heat mediated antigen retrieval with Tris-EDTA buffer (pH 9.0).