

For Research Use Only

SDHC Polyclonal antibody

Catalog Number: 14575-1-AP **3 Publications**



Basic Information

Catalog Number: 14575-1-AP	GenBank Accession Number: BC033626	Purification Method: Antigen affinity purification
Size: 150ul , Concentration: 353 µg/ml by Bradford method using BSA as the standard;	GeneID (NCBI): 6391	Recommended Dilutions: WB 1:1000-1:5000 IHC 1:20-1:200
Source: Rabbit	Full Name: succinate dehydrogenase complex, subunit C, integral membrane protein, 15kDa	
Isotype: IgG	Calculated MW: 19 kDa	
Immunogen Catalog Number: AG5775	Observed MW: 15 kDa	

Applications

Tested Applications: IHC, WB, ELISA	Positive Controls: WB : HepG2 cells, human liver tissue, mouse liver tissue, rat liver tissue IHC : human breast cancer tissue,
Cited Applications: WB	
Species Specificity: human, mouse, rat	
Cited Species: human, mouse	
Note-IHC: suggested antigen retrieval with TE buffer pH 9.0; (*) Alternatively, antigen retrieval may be performed with citrate buffer pH 6.0	

Background Information

SDHC(Succinate dehydrogenase cytochrome b560 subunit, mitochondrial) is also named as CYB560, SDH3 and belongs to the cytochrome b560 family. It is involved in complex II of the mitochondrial electron transport chain and is responsible for transferring electrons from succinate to ubiquinone (coenzyme Q). Defects in SDHC are the cause of paragangliomas type 3 (PGL3) and paraganglioma and gastric stromal sarcoma (PGGS). It has a transit peptide of 29 amino acid and has 5 isoforms produced by alternative splicing.

Notable Publications

Author	Pubmed ID	Journal	Application
Johanna H K Kauppila	29860357	Nucleic Acids Res	WB
Xiao-Hui Wang	34103526	Nat Commun	WB
Jianguo Yan	28771510	PLoS One	WB

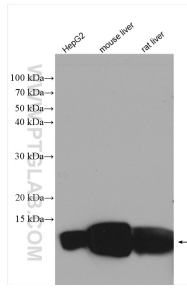
Storage

Storage:
Store at -20°C. Stable for one year after shipment.
Storage Buffer:
PBS with 0.02% sodium azide and 50% glycerol pH 7.3.
Aliquoting is unnecessary for -20°C storage

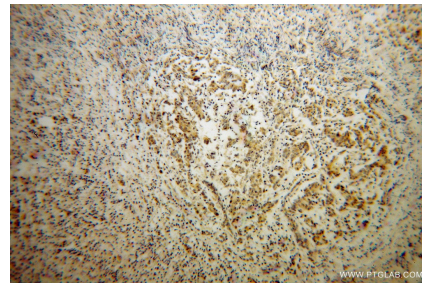
For technical support and original validation data for this product please contact:
T: 1 (888) 4PTGLAB (1-888-478-4522) (toll free in USA), or 1(312) 455-8498 (outside USA)
E: proteintech@ptglab.com
W: ptglab.com

This product is exclusively available under Proteintech Group brand and is not available to purchase from any other manufacturer.

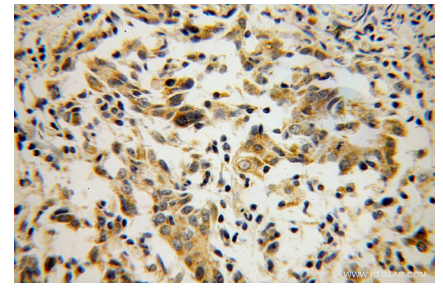
Selected Validation Data



Various lysates were subjected to SDS PAGE followed by western blot with 14575-1-AP (SDHC antibody) at dilution of 1:1000 incubated at room temperature for 1.5 hours.



Immunohistochemical analysis of paraffin-embedded human breast cancer using 14575-1-AP (SDHC antibody) at dilution of 1:100 (under 10x lens).



Immunohistochemical analysis of paraffin-embedded human breast cancer using 14575-1-AP (SDHC antibody) at dilution of 1:100 (under 40x lens).