

For Research Use Only

ERI1 Polyclonal antibody

Catalog Number: 14592-1-AP



Basic Information

Catalog Number: 14592-1-AP	GenBank Accession Number: BC035279	Purification Method: Antigen affinity purification
Size: 150ul , Concentration: 800 ug/ml by Nanodrop and 500 ug/ml by Bradford method using BSA as the standard;	GeneID (NCBI): 90459	Recommended Dilutions: WB 1:500-1:2000
Source: Rabbit	UNIPROT ID: Q8IV48	IHC 1:50-1:500
Isotype: IgG	Full Name: exoribonuclease 1	IF/ICC 1:10-1:100
Immunogen Catalog Number: AG6125	Calculated MW: 40 kDa	
	Observed MW: 46 kDa	

Applications

Tested Applications:
WB, IHC, IF/ICC, ELISA

Species Specificity:
human, mouse, rat

Note-IHC: suggested antigen retrieval with TE buffer pH 9.0; (*) Alternatively, antigen retrieval may be performed with citrate buffer pH 6.0

Positive Controls:

WB : K-562 cells, HepG2 cells, HL-60 cells

IHC : human liver cancer tissue, human testis tissue

IF/ICC : HepG2 cells,

Background Information

ERI1, also named as HEXO, 3'HEXO and THEX1, contains one exonuclease domain and one SAP domain. The SAP domain is necessary for binding to the stem-loop structure of histone mRNAs and to form the ternary complex with SLBP, but not for 3'-end histone mRNA exonuclease activity. It is a RNA exonuclease that binds to the 3'-end of histone mRNAs and degrades them, suggesting that it plays an essential role in histone mRNA decay after replication. It is able to bind other mRNAs. ERI1 is required for 5.8S rRNA 3'-end processing. It also binds to 5.8s ribosomal RNA. ERI1 binds with high affinity to the stem-loop structure of replication-dependent histone pre-mRNAs.

Storage

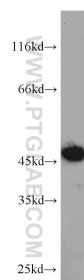
Storage:
Store at -20°C. Stable for one year after shipment.
Storage Buffer:
PBS with 0.02% sodium azide and 50% glycerol pH 7.3.
Aliquoting is unnecessary for -20°C storage

***** 20ul sizes contain 0.1% BSA**

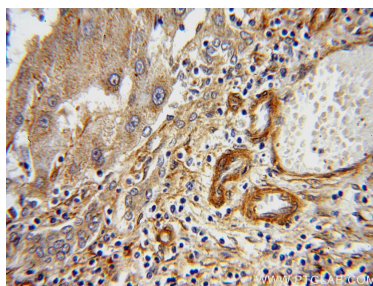
For technical support and original validation data for this product please contact:
T: 1 (888) 4PTGLAB (1-888-478-4522) (toll free in USA), or 1(312) 455-8498 (outside USA)
E: proteintech@ptglab.com
W: ptglab.com

This product is exclusively available under Proteintech Group brand and is not available to purchase from any other manufacturer.

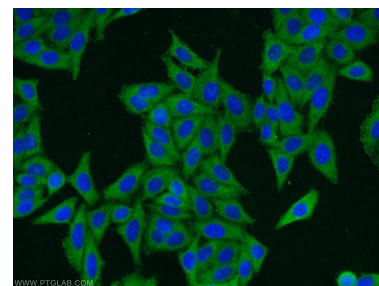
Selected Validation Data



K-562 cells were subjected to SDS PAGE followed by western blot with 14592-1-AP (ERI1 antibody) at dilution of 1:1000 incubated at room temperature for 1.5 hours.



Immunohistochemical analysis of paraffin-embedded human liver cancer using 14592-1-AP (ERI1 antibody) at dilution of 1:100 (under 40x lens).



Immunofluorescent analysis of HepG2 cells using 14592-1-AP (ERI1 antibody) at dilution of 1:25 and Alexa Fluor 488-conjugated Goat Anti-Rabbit IgG(H+L).