

For Research Use Only

# MAGEA6 Polyclonal ANTIBODY

Catalog Number: 14602-1-AP



## Basic Information

Catalog Number:  
14602-1-AP

Size:  
27 µg/150 µl

Source:  
Rabbit

Isotype:  
IgG

Purification Method:  
Antigen affinity purification

Immunogen Catalog Number:  
AG6148

GenBank Accession Number:  
BC067731

GeneID (NCBI):  
4105

Full Name:  
melanoma antigen family A, 6

Calculated MW:  
35 kDa

Observed MW:  
66-70 kDa

Recommended Dilutions:

WB 1:500-1:1000

IHC 1:20-1:200

IF 1:10-1:100

## Applications

Tested Applications:

IF, IHC, WB, ELISA

Species Specificity:

human, mouse

**Note: suggested antigen retrieval with TE buffer pH 9.0; (\*) Alternatively, antigen retrieval may be performed with citrate buffer pH 6.0**

Positive Controls:

WB : HepG2 cells; A375 cells, HeLa cells, MCF-7 cells, mouse testis tissue

IHC : human lung cancer tissue; human breast cancer tissue

IF : A375 cells;

## Background Information

### Notable Publications

Author	Pubmed ID	Journal	Application
--------	-----------	---------	-------------

## Storage

Storage:

Store at -20°C. Stable for one year after shipment.

Storage Buffer:

PBS with 0.02% sodium azide and 50% glycerol pH 7.3.

Aliquoting is unnecessary for -20°C storage

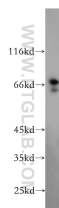
For technical support and original validation data for this product please contact:

T: 1 (888) 4PTGLAB (1-888-478-4522) (toll free in USA), or 1(312) 455-8498 (outside USA)

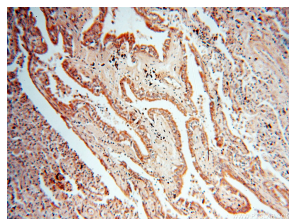
E: [proteintech@ptglab.com](mailto:proteintech@ptglab.com)  
W: [ptglab.com](http://ptglab.com)

This product is exclusively available under Proteintech Group brand and is not available to purchase from any other manufacturer.

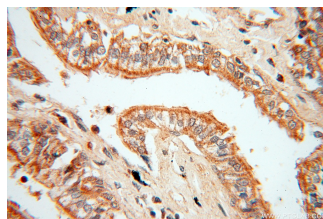
## Selected Validation Data



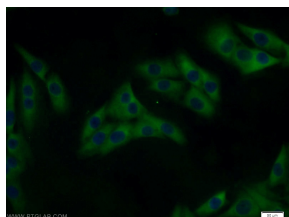
HepG2 cells were subjected to SDS PAGE followed by western blot with 14602-1-AP(MAGEA6 antibody) at dilution of 1:500 incubated at room temperature for 1.5 hours



Immunohistochemical of paraffin-embedded human lung cancer using 14602-1-AP(MAGEA6 antibody) at dilution of 1:50 (under 10x lens)



Immunohistochemical of paraffin-embedded human lung cancer using 14602-1-AP(MAGEA6 antibody) at dilution of 1:50 (under 40x lens)



Immunofluorescent analysis of A375 cells using 14602-1-AP(MAGEA6 antibody) at dilution of 1:25 and Alexa Fluor 488-conjugated AffiniPure Goat Anti-Rabbit IgG(H+L)