

For Research Use Only

SHARPIN Polyclonal antibody

Catalog Number: 14626-1-AP

Featured Product

108 Publications



Basic Information

Catalog Number:

14626-1-AP

Size:

150ul, Concentration: 650 ug/ml by Nanodrop;

Source:

Rabbit

Isotype:

IgG

Immunogen Catalog Number:

AG6201

GenBank Accession Number:

BC025244

GeneID (NCBI):

81858

UNIPROT ID:

Q9H0F6

Full Name:

SHANK-associated RH domain interactor

Calculated MW:

40 kDa

Observed MW:

40 kDa

Purification Method:

Antigen affinity purification

Recommended Dilutions:

WB: 1:5000-1:50000

IP: 0.5-4.0 ug for 1.0-3.0 mg of total protein lysate

IHC: 1:100-1:400

IF/ICC: 1:200-1:800

Applications

Tested Applications:

WB, IHC, IF/ICC, IP, ELISA

Cited Applications:

WB, IHC, IF, IP, CoIP

Species Specificity:

human, mouse

Cited Species:

human, mouse, rat

Positive Controls:

WB: A549 cells, mouse brain tissue, mouse skeletal muscle tissue, Jurkat cells, Raji cells

IP: Raji cells,

IHC: human lymphoma tissue, human small intestine tissue

IF/ICC: Jurkat cells,

Note-IHC: suggested antigen retrieval with TE buffer pH 9.0; (*) Alternatively, antigen retrieval may be performed with citrate buffer pH 6.0

Background Information

SHARPIN is as a third component of the linear ubiquitin chain assembly complex (LUBAC), recruited to the CD40 and TNF receptor signaling complexes together with its other constituents, HOIL1 and HOIP (PMID:21455173). SHARPIN is enriched in the postsynaptic density and forms a complex with SHANK in heterologous cells and brain (PMID:11178875). It has 2 isoforms produced by alternative splicing.

Notable Publications

Author	Pubmed ID	Journal	Application
Matthias Kist	32999468	Cell Death Differ	WB, IP
Lucia Taraborrelli	30254289	Nat Commun	WB
Umar Butt	36148554	J Cell Sci	WB

Storage

Storage:

Store at -20°C. Stable for one year after shipment.

Storage Buffer:

PBS with 0.02% sodium azide and 50% glycerol, pH7.3

Aliquoting is unnecessary for -20°C storage

*** 20ul sizes contain 0.1% BSA

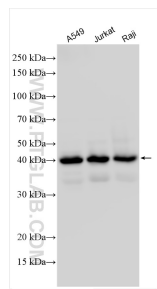
For technical support and original validation data for this product please contact:

T: 1 (888) 4PTGLAB (1-888-478-4522) (toll free in USA), or 1(312) 455-8498 (outside USA)

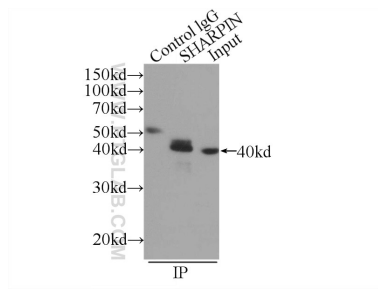
E: proteintech@ptglab.com
W: ptglab.com

This product is exclusively available under Proteintech Group brand and is not available to purchase from any other manufacturer.

Selected Validation Data



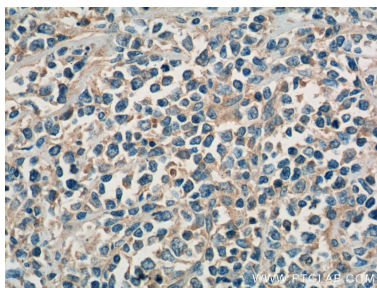
Various lysates were subjected to SDS PAGE followed by western blot with 14626-1-AP (SHARPIN antibody) at dilution of 1:40000 incubated at room temperature for 1.5 hours.



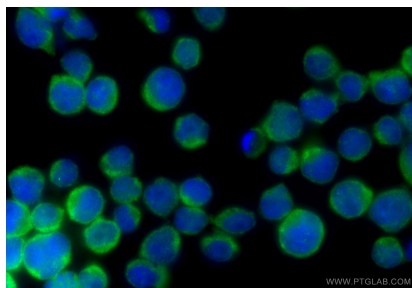
IP result of anti-SHARPIN (IP:14626-1-AP, 3ug; Detection:14626-1-AP 1:1500) with Raji cells lysate 2520ug.



Immunohistochemical analysis of paraffin-embedded human lymphoma tissue slide using 14626-1-AP (SHARPIN Antibody) at dilution of 1:200 (under 10x lens). Heat mediated antigen retrieval with Tris-EDTA buffer (pH 9.0).



Immunohistochemical analysis of paraffin-embedded human lymphoma tissue slide using 14626-1-AP (SHARPIN Antibody) at dilution of 1:200 (under 40x lens). Heat mediated antigen retrieval with Tris-EDTA buffer (pH 9.0).



Immunofluorescent analysis of (4% PFA) fixed Jurkat cells using SHARPIN antibody (14626-1-AP) at dilution of 1:400 and Multi-rAb CoraLite® Plus 488-Goat Anti-Rabbit Recombinant Secondary Antibody (H+L) (RGAR002).