

For Research Use Only

# ABCB10 Polyclonal ANTIBODY



Catalog Number: 14628-1-AP

Featured Product

2 Publications

## Basic Information

Catalog Number:  
14628-1-AP

Size:  
20 µg/150 µl

Source:  
Rabbit

Isotype:  
IgG

Purification Method:  
Antigen affinity purification

Immunogen Catalog Number:  
AG6203

GenBank Accession Number:  
BC064930

GeneID (NCBI):  
23456

Full Name:  
ATP-binding cassette, sub-family B  
(MDR/TAP), member 10

Calculated MW:  
79 kDa

Observed MW:  
60 kDa

Recommended Dilutions:

WB 1:500-1:1000

IP 0.5-4.0 µg for IP and 1:200-1:1000 for WB

## Applications

Tested Applications:

IP, WB, ELISA

Cited Applications:

WB

Species Specificity:  
human,mouse,rat

Cited Species:  
human

**Note: suggested antigen retrieval with TE  
buffer pH 9.0; (\*) Alternatively, antigen  
retrieval may be performed with citrate  
buffer pH 6.0**

Positive Controls:

WB : K-562 cells; Jurkat cells

IP : K-562 cells;

## Background Information

### Notable Publications

Author	Pubmed ID	Journal	Application
Masato Yano	28315685	Biochem Biophys Res Commun	WB
Naotaka Nishimura	24765583	PeerJ	WB

## Storage

Storage:

Store at -20°C. Stable for one year after shipment.

Storage Buffer:

PBS with 0.02% sodium azide and 50% glycerol pH 7.3.

Aliquoting is unnecessary for -20°C storage

For technical support and original validation data for this product please contact:

T: 1 (888) 4PTGLAB (1-888-478-4522) (toll free in USA), or 1(312) 455-8498 (outside USA)

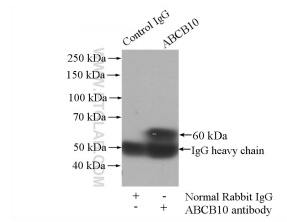
E: [proteintech@ptglab.com](mailto:proteintech@ptglab.com)  
W: [ptglab.com](http://ptglab.com)

This product is exclusively available under Proteintech Group brand and is not available to purchase from any other manufacturer.

## Selected Validation Data



K-562 cells were subjected to SDS PAGE followed by western blot with 14628-1-AP(ABCB10 antibody) at dilution of 1:500 incubated at room temperature for 1.5 hours



IP Result of anti-ABCB10 (IP:14628-1-AP, 4ug; Detection:14628-1-AP 1:300) with K-562 cells lysate 3200ug.