

For Research Use Only

# CHMP1B Polyclonal antibody

Catalog Number: 14639-1-AP **5 Publications**



## Basic Information

**Catalog Number:**

14639-1-AP

**Size:**

150ul, Concentration: 600 µg/ml by Nanodrop and 267 µg/ml by Bradford method using BSA as the standard;

**Source:**

Rabbit

**Isotype:**

IgG

**Immunogen Catalog Number:**

AG6222

**GenBank Accession Number:**

BC065933

**GeneID (NCBI):**

57132

**Full Name:**

chromatin modifying protein 1B

**Calculated MW:**

22 kDa

**Observed MW:**

28 kDa

**Purification Method:**

Antigen affinity purification

**Recommended Dilutions:**

WB 1:1000-1:2000

IP 0.5-4.0 ug for IP and 1:200-1:1000 for WB

IHC 1:50-1:500

## Applications

**Tested Applications:**

IHC, IP, WB, ELISA

**Cited Applications:**

IF, WB

**Species Specificity:**

human, mouse, rat

**Cited Species:**

human, mouse

**Note-IHC: suggested antigen retrieval with TE buffer pH 9.0; (\*) Alternatively, antigen retrieval may be performed with citrate buffer pH 6.0**

**Positive Controls:**

WB: human heart tissue, A431 cells, HeLa cells, mouse heart tissue, rat heart tissue

IP: HeLa cells,

IHC: human kidney tissue,

## Background Information

### Notable Publications

Author	Pubmed ID	Journal	Application
Ekansh Mittal	30482832	MBio	IF
Anil G Cashikar	24878737	Elife (Cambridge)	IF
Moona Huttunen	34145027	Life Sci Alliance	IF

## Storage

**Storage:**

Store at -20°C. Stable for one year after shipment.

**Storage Buffer:**

PBS with 0.02% sodium azide and 50% glycerol pH 7.3.

Aliquoting is unnecessary for -20°C storage

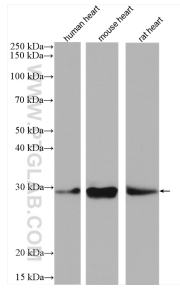
For technical support and original validation data for this product please contact:

T: 1 (888) 4PTGLAB (1-888-478-4522) (toll free in USA), or 1(312) 455-8498 (outside USA)

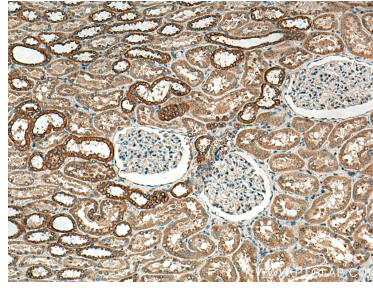
E: [proteintech@ptglab.com](mailto:proteintech@ptglab.com)  
W: [ptglab.com](http://ptglab.com)

**This product is exclusively available under Proteintech Group brand and is not available to purchase from any other manufacturer.**

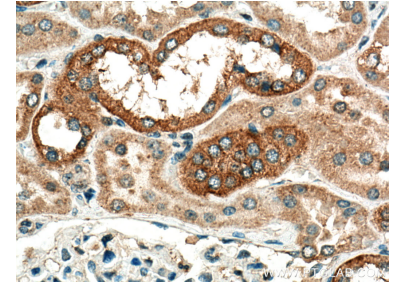
## Selected Validation Data



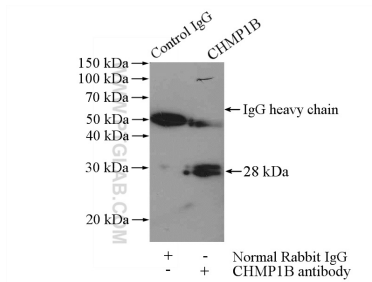
Various lysates were subjected to SDS PAGE followed by western blot with 14639-1-AP (CHMP1B antibody) at dilution of 1:3000 incubated at room temperature for 1.5 hours.



Immunohistochemical analysis of paraffin-embedded human kidney tissue slide using 14639-1-AP (CHMP1B antibody) at dilution of 1:200 (under 10x lens). Heat mediated antigen retrieval with Tris-EDTA buffer (pH 9.0).



Immunohistochemical analysis of paraffin-embedded human kidney tissue slide using 14639-1-AP (CHMP1B antibody) at dilution of 1:200 (under 40x lens). Heat mediated antigen retrieval with Tris-EDTA buffer (pH 9.0).



IP Result of anti-CHMP1B (IP:14639-1-AP, 4ug; Detection:14639-1-AP 1:300) with HeLa cells lysate 880ug.