

# IGF2BP3 Polyclonal ANTIBODY

Catalog Number: 14642-1-AP

Featured Product

10 Publications

## Basic Information

**Catalog Number:**  
14642-1-AP

**Size:**  
22 µg/150 µl

**Source:**  
Rabbit

**Isotype:**  
IgG

**Purification Method:**  
Antigen affinity purification

**Immunogen Catalog Number:**  
AG6226

**GenBank Accession Number:**  
BC065269

**GeneID (NCBI):**  
10643

**Full Name:**  
insulin-like growth factor 2 mRNA binding protein 3

**Calculated MW:**  
64 kDa

**Observed MW:**  
64 kDa

**Recommended Dilutions:**

WB 1:500-1:2000

IP 0.5-4.0 µg for IP and 1:500-1:2000 for WB

IHC 1:20-1:200

IF 1:10-1:100

## Applications

**Tested Applications:**  
IF, IHC, IP, WB, ELISA

**Cited Applications:**  
IF, IHC, WB

**Species Specificity:**  
human, mouse

**Cited Species:**  
human, mouse, rat

**Note: suggested antigen retrieval with TE buffer pH 9.0; (\*) Alternatively, antigen retrieval may be performed with citrate buffer pH 6.0**

**Positive Controls:**

**WB:** HepG2 cells; BxPC-3 cells, HeLa cells, mouse brain tissue

**IP:** HeLa cells;

**IHC:** human pancreas cancer tissue;

**IF:** MCF-7 cells;

## Background Information

IGF2BP3, also named as IMP3, KOC1 and VICKZ3, belongs to the RRM1IMP/VICKZ family. It is one of the RNA binding proteins involved in mRNA localization and translational control. IGF2BP3 is expressed during embryogenesis, as well as in some malignant tumors. It can be used as an independent prognostic factor for osteosarcoma. Both isoforms (64kd and 22kd) of IGF2BP3 can be recognized by this antibody. And IGF2BP3 is nuclear and cytoplasm stains.

## Notable Publications

Author	Pubmed ID	Journal	Application
Reschke Markus M	24055062	Cell Rep	WB
Sita Kugel	27180906	Cell	WB
Yan Zhang	27283992	Oncotarget	WB

## Storage

**Storage:**

Store at -20°C. Stable for one year after shipment.

**Storage Buffer:**

PBS with 0.02% sodium azide and 50% glycerol pH 7.3.

Aliquoting is unnecessary for -20°C storage

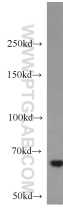
For technical support and original validation data for this product please contact:

T: 1 (888) 4PTGLAB (1-888-478-4522) (toll free in USA), or 1(312) 455-8498 (outside USA)

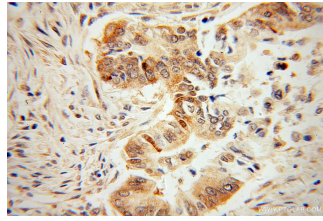
E: [proteintech@ptglab.com](mailto:proteintech@ptglab.com)  
W: [ptglab.com](http://ptglab.com)

This product is exclusively available under Proteintech Group brand and is not available to purchase from any other manufacturer.

## Selected Validation Data



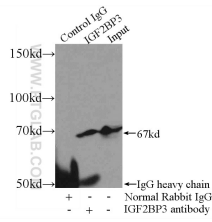
HepG2 cells were subjected to SDS PAGE followed by western blot with 14642-1-AP(IGF2BP3 antibody) at dilution of 1:1000 incubated at room temperature for 1.5 hours



Immunohistochemical of paraffin-embedded human pancreas cancer using 14642-1-AP(IGF2BP3 antibody) at dilution of 1:100 (under 40x lens)



Immunofluorescent analysis of MCF-7 cells using IGF2BP3 antibody 14642-1-AP at 1:25 dilution and Rhodamine-labeled goat anti-rabbit IgG (red). Blue pseudocolor = DAPI (fluorescent DNA dye).



IP Result of anti-IGF2BP3 (IP:14642-1-AP, 3ug; Detection: 14642-1-AP 1:1000) with HeLa cells lysate 4400ug.