

For Research Use Only

# REEP5 Polyclonal antibody

Catalog Number: 14643-1-AP

Featured Product

53 Publications



## Basic Information

### Catalog Number:

14643-1-AP

### Size:

150ul, Concentration: 700 ug/ml by Nanodrop;

### Source:

Rabbit

### Isotype:

IgG

### Immunogen Catalog Number:

AG6229

### GenBank Accession Number:

BC065926

### GeneID (NCBI):

7905

### UNIPROT ID:

Q00765

### Full Name:

receptor accessory protein 5

### Calculated MW:

21 kDa

### Observed MW:

18-21 kDa

### Purification Method:

Antigen affinity purification

### Recommended Dilutions:

WB: 1:5000-1:50000

IP: 0.5-4.0 ug for 1.0-3.0 mg of total protein lysate

IHC: 1:300-1:1200

IF/ICC: 1:50-1:500

FC (Intra): 0.25 ug per 10<sup>6</sup> cells in a 100 µl suspension

## Applications

### Tested Applications:

WB, IHC, IF/ICC, FC (Intra), IP, ELISA

### Cited Applications:

WB, IHC, IF, IP

### Species Specificity:

human, mouse, rat

### Cited Species:

human, mouse, monkey, xenopus

**Note-IHC: suggested antigen retrieval with TE buffer pH 9.0; (\*) Alternatively, antigen retrieval may be performed with citrate buffer pH 6.0**

### Positive Controls:

WB: HeLa cells, mouse heart tissue, rat heart tissue

IP: HeLa cells,

IHC: human colon cancer tissue,

IF/ICC: A549 cells,

FC (Intra): HeLa cells,

## Background Information

REEP5 (receptor expression-enhancing protein 5), also named as C5orf18, DP1 or TB2, is a membrane protein belonging to DP1/Yop1p protein family. All REEP proteins contain a conserved TB2/DP1, HVA22 domain which is involved in intracellular trafficking and secretion (PMID: 19123125). REEP5 is expressed in circumvallate papillae and testis, and may have the function to influence functional cell surface expression of taste receptors (PMID: 16720576). REEP5 can interact with atlastins (ATL1 and ATL2) which are involved in modulating the structure of ER network (PMID: 19665976).

## Notable Publications

Author	Pubmed ID	Journal	Application
Andrea Tirinci	36139500	Cells	WB
Benoît Renvoisé	27638887	Hum Mol Genet	WB
M. Elena Garcia-Pardo	34496765	BMC Bioinformatics	IF

## Storage

### Storage:

Store at -20°C. Stable for one year after shipment.

### Storage Buffer:

PBS with 0.02% sodium azide and 50% glycerol, pH7.3

Aliquoting is unnecessary for -20°C storage

\*\*\* 20ul sizes contain 0.1% BSA

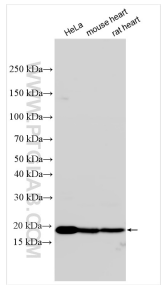
For technical support and original validation data for this product please contact:

T: 1 (888) 4PTGLAB (1-888-478-4522) (toll free in USA), or 1(312) 455-8498 (outside USA)

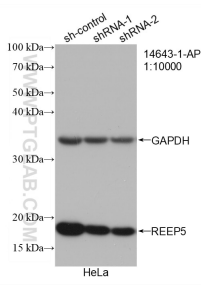
E: [proteintech@ptglab.com](mailto:proteintech@ptglab.com)  
W: [ptglab.com](http://ptglab.com)

This product is exclusively available under Proteintech Group brand and is not available to purchase from any other manufacturer.

Selected Validation Data

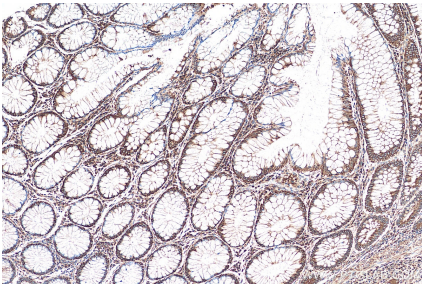


Various lysates were subjected to SDS PAGE followed by western blot with 14643-1-AP (REEP5 antibody) at dilution of 1:20000 incubated at room temperature for 1.5 hours.

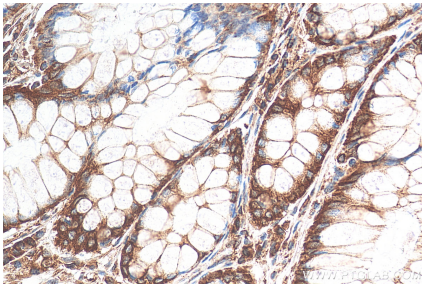


WB result of REEP5 antibody (14643-1-AP; 1:10000; incubated at room temperature for 1.5 hours) with sh-Control and sh-REEP5 transfected HeLa cells.

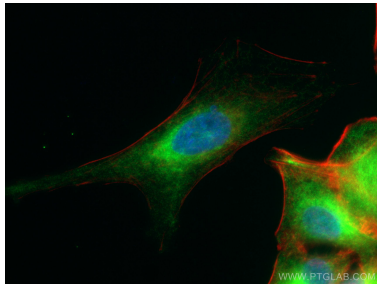
IP result of anti-REEP5 (IP:14643-1-AP, 4ug; Detection:14643-1-AP 1:10000) with HeLa cells lysate 1280 ug.



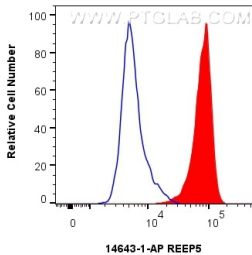
Immunohistochemical analysis of paraffin-embedded human colon cancer tissue slide using 14643-1-AP (REEP5 antibody) at dilution of 1:600 (under 10x lens). Heat mediated antigen retrieval with Tris-EDTA buffer (pH 9.0).



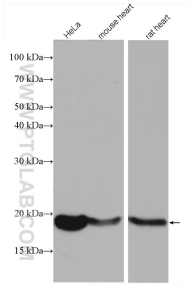
Immunohistochemical analysis of paraffin-embedded human colon cancer tissue slide using 14643-1-AP (REEP5 antibody) at dilution of 1:600 (under 40x lens). Heat mediated antigen retrieval with Tris-EDTA buffer (pH 9.0).



Immunofluorescent analysis of (4% PFA) fixed A549 cells using REEP5 antibody (14643-1-AP) at dilution of 1:200 and CoraLite@488-Conjugated AffiniPure Goat Anti-Rabbit IgG(H+L). F-actin is stained using CL555-phalloidin (red) and DNA is stained by DAPI (blue).



1x10<sup>6</sup> HeLa cells were intracellularly stained with 0.25 ug REEP5 Polyclonal antibody (14643-1-AP) and CoraLite@488-Conjugated Goat Anti-Rabbit IgG(H+L) (SA00013-2)(red), or 0.25 ug Rabbit IgG control Rabbit PolyAb (30000-O-AP) (blue). Cells were fixed with 4% PFA and permeabilized with Flow Cytometry Perm Buffer (PF00011-C).



Various lysates were subjected to SDS PAGE followed by western blot with 14643-1-AP (REEP5 antibody) at dilution of 1:5000 incubated at room temperature for 1.5 hours.