

For Research Use Only

# ADHFE1 Polyclonal antibody

Catalog Number: 14674-1-AP

1 Publications



## Basic Information

Catalog Number:

14674-1-AP

Size:

150ul, Concentration: 647 ug/ml by Bradford method using BSA as the standard;

Source:

Rabbit

Isotype:

IgG

Immunogen Catalog Number:

AG6382

GenBank Accession Number:

BC064634

GeneID (NCBI):

137872

UNIPROT ID:

Q8IWW8

Full Name:

alcohol dehydrogenase, iron containing, 1

Calculated MW:

50 kDa

Observed MW:

50 kDa, 40-45 kDa

Purification Method:

Antigen affinity purification

Recommended Dilutions:

WB: 1:500-1:2000

IHC: 1:100-1:400

## Applications

Tested Applications:

WB, IHC, ELISA

Species Specificity:

human, mouse, rat

**Note-IHC: suggested antigen retrieval with TE buffer pH 9.0; (\*) Alternatively, antigen retrieval may be performed with citrate buffer pH 6.0**

Positive Controls:

WB: HT-29 cells, mouse kidney tissue, mouse liver tissue, rat kidney tissue

IHC: human colon tissue, human colon cancer tissue, human liver tissue

## Background Information

The ADHFE1 gene encodes hydroxyacid-oxoacid transhydrogenase which is responsible for the oxidation of 4-hydroxybutyrate in mammalian tissues. It belongs to the iron-containing alcohol dehydrogenase family. ADHFE1 has 4 isoforms produced by alternative splicing with the MW of 50, 45, 32, 27 kDa.

## Notable Publications

Author	Pubmed ID	Journal	Application
Holger Husi	24573165	Circ Cardiovasc Genet	

## Storage

Storage:

Store at -20°C. Stable for one year after shipment.

Storage Buffer:

PBS with 0.02% sodium azide and 50% glycerol, pH7.3

Aliquoting is unnecessary for -20°C storage

\*\*\* 20ul sizes contain 0.1% BSA

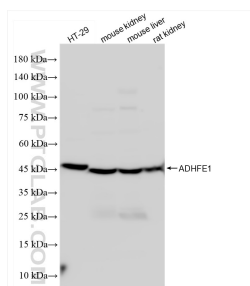
For technical support and original validation data for this product please contact:

T: 1 (888) 4PTGLAB (1-888-478-4522) (toll free in USA), or 1(312) 455-8498 (outside USA)

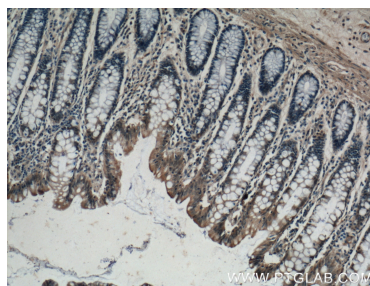
E: [proteintech@ptglab.com](mailto:proteintech@ptglab.com)  
W: [ptglab.com](http://ptglab.com)

This product is exclusively available under Proteintech Group brand and is not available to purchase from any other manufacturer.

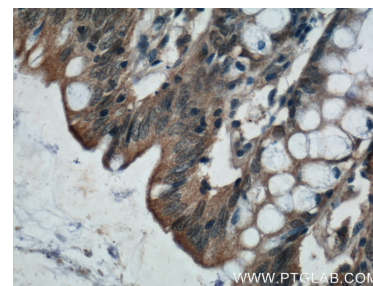
## Selected Validation Data



Various lysates were subjected to SDS PAGE followed by western blot with 14674-1-AP (ADHFE1 antibody) at dilution of 1:1000 incubated at room temperature for 1.5 hours.



Immunohistochemical analysis of paraffin-embedded human colon tissue slide using 14674-1-AP (ADHFE1 Antibody) at dilution of 1:200 (under 10x lens).



Immunohistochemical analysis of paraffin-embedded human colon tissue slide using 14674-1-AP (ADHFE1 Antibody) at dilution of 1:200 (under 40x lens).