

For Research Use Only

# ZADH2 Polyclonal ANTIBODY

Catalog Number: 14679-1-AP



## Basic Information

<b>Catalog Number:</b> 14679-1-AP	<b>GenBank Accession Number:</b> BC078661	<b>Recommended Dilutions:</b> WB 1:500-1:1000 IHC 1:20-1:200
<b>Size:</b> 20 µg/150 µl	<b>GeneID (NCBI):</b> 284273	
<b>Source:</b> Rabbit	<b>Full Name:</b> zinc binding alcohol dehydrogenase domain containing 2	
<b>Isotype:</b> IgG	<b>Calculated MW:</b> 40 kDa	
<b>Purification Method:</b> Antigen affinity purification	<b>Observed MW:</b> 40 kDa	
<b>Immunogen Catalog Number:</b> AG6390		

## Applications

<b>Tested Applications:</b> IHC, WB, ELISA	<b>Positive Controls:</b>
<b>Species Specificity:</b> human,mouse,rat	WB : mouse brain tissue; IHC : human pancreas cancer;
<b>Note: suggested antigen retrieval with TE buffer pH 9.0; (*) Alternatively, antigen retrieval may be performed with citrate buffer pH 6.0</b>	

## Background Information

### Notable Publications

Author	Pubmed ID	Journal	Application
--------	-----------	---------	-------------

## Storage

**Storage:**  
Store at -20°C. Stable for one year after shipment.  
**Storage Buffer:**  
PBS with 0.02% sodium azide and 50% glycerol pH 7.3.  
Aliquoting is unnecessary for -20°C storage

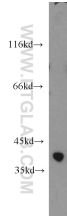
For technical support and original validation data for this product please contact:

T: 1 (888) 4PTGLAB (1-888-478-4522) (toll free in USA), or 1(312) 455-8498 (outside USA)

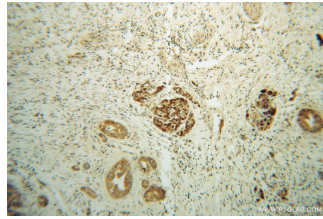
E: [proteintech@ptglab.com](mailto:proteintech@ptglab.com)  
W: [ptglab.com](http://ptglab.com)

This product is exclusively available under Proteintech Group brand and is not available to purchase from any other manufacturer.

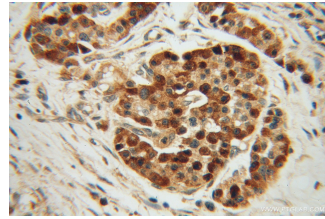
## Selected Validation Data



mouse brain tissue were subjected to SDS PAGE followed by western blot with 14679-1-AP(ZADH2 antibody) at dilution of 1:1000 incubated at room temperature for 1.5 hours



Immunohistochemical of paraffin-embedded human pancreas cancer using 14679-1-AP(ZADH2 antibody) at dilution of 1:50 (under 10x lens)



Immunohistochemical of paraffin-embedded human pancreas cancer using 14679-1-AP(ZADH2 antibody) at dilution of 1:50 (under 40x lens)