

For Research Use Only

PCP4 Polyclonal ANTIBODY



Catalog Number: 14705-1-AP

1 Publications

Basic Information

Catalog Number:
14705-1-AP

Size:
33 µg/150 µl

Source:
Rabbit

Isotype:
IgG

Purification Method:
Antigen affinity purification

Immunogen Catalog Number:
AG6388

GenBank Accession Number:
BC013791

GeneID (NCBI):
5121

Full Name:
Purkinje cell protein 4

Calculated MW:
7 kDa

Observed MW:
8 kDa

Recommended Dilutions:

WB 1:200-1:1000

IP 0.5-4.0 µg for IP and 1:500-1:2000 for WB

IHC 1:50-1:500

Applications

Tested Applications:

IHC, IP, WB, ELISA

Cited Applications:

IF

Species Specificity:
human,mouse,rat

Cited Species:
rat

**Note-IHC: suggested antigen retrieval with
TE buffer pH 9.0; (*) Alternatively, antigen
retrieval may be performed with citrate
buffer pH 6.0**

Positive Controls:

WB : mouse brain tissue;

IP : mouse brain tissue;

IHC : human cerebellum tissue; mouse brain tissue

Background Information

PCP4, also named as PEP19, belongs to a family of proteins involved in calcium transduction signals and binds calmodulin via an IQ motif, in a calcium independent manner. It is mainly expressed in ectoderm and neuroectoderm comprising neural crest derived cells.

Notable Publications

Author	Pubmed ID	Journal	Application
Heydar Davoudi	30664772	Nat Neurosci	IF

Storage

Storage:

Store at -20°C. Stable for one year after shipment.

Storage Buffer:

PBS with 0.1% sodium azide and 50% glycerol pH 7.3.

Aliquoting is unnecessary for -20°C storage

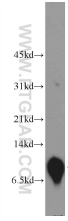
For technical support and original validation data for this product please contact:

T: 1 (888) 4PTGLAB (1-888-478-4522) (toll free in USA), or 1(312) 455-8498 (outside USA)

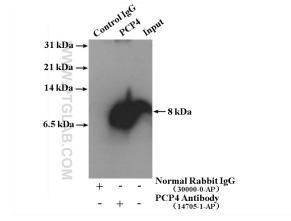
E: proteintech@ptglab.com
W: ptglab.com

This product is exclusively available under Proteintech Group brand and is not available to purchase from any other manufacturer.

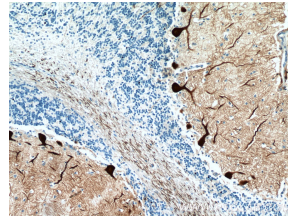
Selected Validation Data



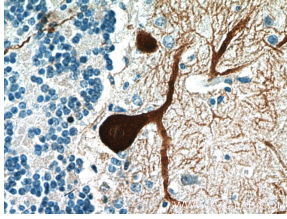
mouse brain tissue were subjected to SDS PAGE followed by western blot with 14705-1-AP(PCP4 Antibody) at dilution of 1:300 incubated at room temperature for 1.5 hours



IP result of anti-PCP4(IP:14705-1-AP, 4ug; Detection:14705-1-AP 1:1000) with mouse brain tissue lysate 4000 ug



Immunohistochemical analysis of paraffin-embedded human cerebellum tissue slide using 14705-1-AP(PCP4 Antibody) at dilution of 1:200 (under 10x lens).



Immunohistochemical analysis of paraffin-embedded human cerebellum tissue slide using 14705-1-AP(PCP4 Antibody) at dilution of 1:200 (under 40x lens).