

For Research Use Only

AHSA1 Polyclonal antibody

Catalog Number: 14725-1-AP



Basic Information

Catalog Number:

14725-1-AP

Size:

150UL, Concentration: 750 µg/ml by Nanodrop and 313 µg/ml by Bradford method using BSA as the standard;

Source:

Rabbit

Isotype:

IgG

Immunogen Catalog Number:

AG6482

GenBank Accession Number:

BC000321

GeneID (NCBI):

10598

Full Name:

AHA1, activator of heat shock 90kDa protein ATPase homolog 1 (yeast)

Calculated MW:

338 aa, 38 kDa

Observed MW:

38 kDa

Purification Method:

Antigen affinity purification

Recommended Dilutions:

WB 1:500-1:3000

IP 0.5-4.0 ug for IP and 1:500-1:1000 for WB

IHC 1:20-1:200

IF 1:20-1:200

Applications

Tested Applications:

IF, IHC, IP, WB, ELISA

Species Specificity:

human, mouse, rat

Note-IHC: suggested antigen retrieval with TE buffer pH 9.0; (*) Alternatively, antigen retrieval may be performed with citrate buffer pH 6.0

Positive Controls:

WB: A431 cells, HeLa cells, mouse brain tissue, HEK-293 cells, A549 cells, rat brain tissue

IP: mouse brain tissue,

IHC: human gliomas tissue,

IF: A431 cells,

Background Information

Storage

Storage:

Store at -20°C. Stable for one year after shipment.

Storage Buffer:

PBS with 0.02% sodium azide and 50% glycerol pH 7.3.

Aliquoting is unnecessary for -20°C storage

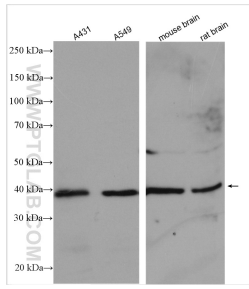
For technical support and original validation data for this product please contact:

T: 1 (888) 4PTGLAB (1-888-478-4522) (toll free in USA), or 1(312) 455-8498 (outside USA)

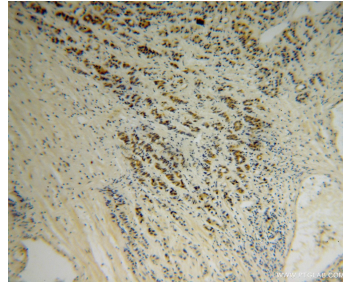
E: proteintech@ptglab.com
W: ptglab.com

This product is exclusively available under Proteintech Group brand and is not available to purchase from any other manufacturer.

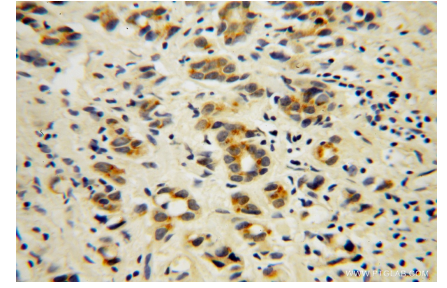
Selected Validation Data



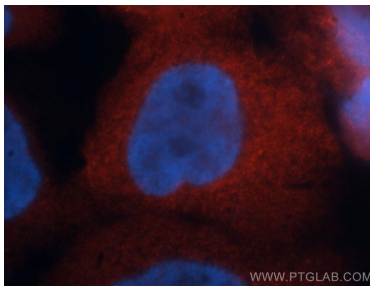
Various lysates were subjected to SDS PAGE followed by western blot with 14725-1-AP (AHSA1 antibody) at dilution of 1:1500 incubated at room temperature for 1.5 hours.



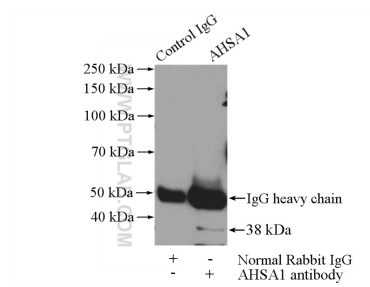
Immunohistochemical analysis of paraffin-embedded human gliomas using 14725-1-AP (AHSA1 antibody) at dilution of 1:50 (under 10x lens).



Immunohistochemical analysis of paraffin-embedded human gliomas using 14725-1-AP (AHSA1 antibody) at dilution of 1:50 (under 40x lens).



Immunofluorescent analysis of A431 cells, using AHSA1 antibody 14725-1-AP at 1:50 dilution and Rhodamine-labeled goat anti-rabbit IgG (red). Blue pseudocolor = DAPI (fluorescent DNA dye).



IP Result of anti-AHSA1 (IP:14725-1-AP, 4ug; Detection:14725-1-AP 1:500) with mouse brain tissue lysate 2640ug.