

For Research Use Only

SPAG5 Polyclonal antibody

Catalog Number: 14726-1-AP

Featured Product

17 Publications



Basic Information

Catalog Number:

14726-1-AP

Size:

150ul, Concentration: 800 ug/ml by Nanodrop;

Source:

Rabbit

Isotype:

IgG

Immunogen Catalog Number:

AG6485

GenBank Accession Number:

BC000322

GeneID (NCBI):

10615

UNIPROT ID:

Q96R06

Full Name:

sperm associated antigen 5

Calculated MW:

134 kDa

Observed MW:

135 kDa, 150 kDa

Purification Method:

Antigen affinity purification

Recommended Dilutions:

WB: 1:500-1:2000

IP: 0.5-4.0 ug for 1.0-3.0 mg of total protein lysate

IHC: 1:50-1:500

IF/ICC: 1:50-1:500

Applications

Tested Applications:

WB, IHC, IF/ICC, IP, ELISA

Cited Applications:

WB, IHC, IF, IP

Species Specificity:

human, mouse

Cited Species:

human, mouse

Note-IHC: suggested antigen retrieval with TE buffer pH 9.0; (*) Alternatively, antigen retrieval may be performed with citrate buffer pH 6.0

Positive Controls:

WB: A549 cells, HeLa cells, K-562 cells, PC-3 cells

IP: HeLa cells,

IHC: human testis tissue, mouse testis tissue

IF/ICC: HeLa cells,

Background Information

SPAG5, also named as MAP126, Astrin and Deepest, is necessary for normal spindle formation during mitosis. It is highly expressed in testis. SPAG5 has different localization in somatic versus male germ cells suggesting the possibility of different function. This antibody is specific to SPAG5.

Notable Publications

Author	Pubmed ID	Journal	Application
Zhenguang Ying	36280838	BMC Biol	WB,IF
Diego R Revinski	30405130	Nat Commun	WB,IF
Désirée Schatton	35559794	Elife	WB,IP

Storage

Storage:

Store at -20°C. Stable for one year after shipment.

Storage Buffer:

PBS with 0.02% sodium azide and 50% glycerol, pH7.3

Aliquoting is unnecessary for -20°C storage

*** 20ul sizes contain 0.1% BSA

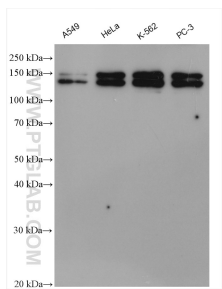
For technical support and original validation data for this product please contact:

T: 1 (888) 4PTGLAB (1-888-478-4522) (toll free in USA), or 1(312) 455-8498 (outside USA)

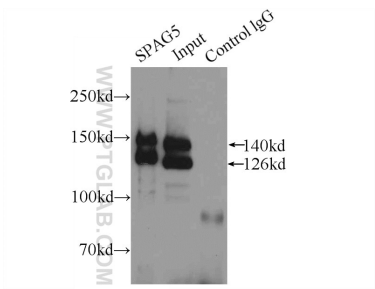
E: proteintech@ptglab.com
W: ptglab.com

This product is exclusively available under Proteintech Group brand and is not available to purchase from any other manufacturer.

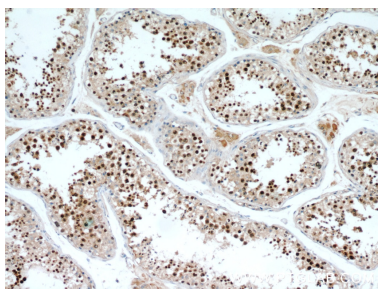
Selected Validation Data



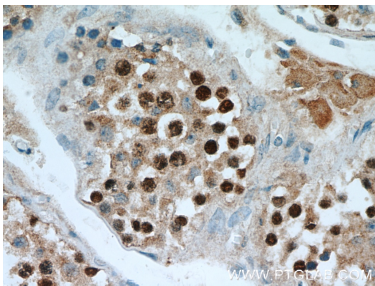
Various lysates were subjected to SDS PAGE followed by western blot with 14726-1-AP (SPAG5 antibody) at dilution of 1:1000 incubated at room temperature for 1.5 hours.



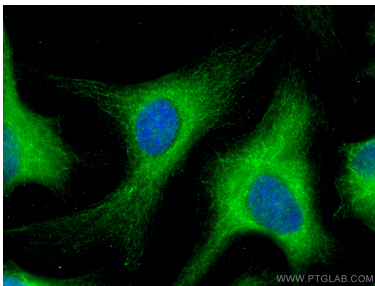
IP result of anti-SPAG5 (IP:14726-1-AP, 5ug; Detection:14726-1-AP 1:1000) with HeLa cells lysate 3000ug.



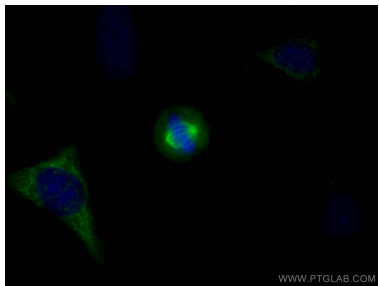
Immunohistochemical analysis of paraffin-embedded human testis using 14726-1-AP (SPAG5 antibody) at dilution of 1:100 (under 10x lens).



Immunohistochemical analysis of paraffin-embedded human testis using 14726-1-AP (SPAG5 antibody) at dilution of 1:100 (under 40x lens).



Immunofluorescent analysis of (-20°C Ethanol) fixed HeLa cells using SPAG5 antibody (14726-1-AP) at dilution of 1:200 and CoraLite®488-Conjugated AffiniPure Goat Anti-Rabbit IgG(H+L).



Immunofluorescent analysis of (-20°C Ethanol) fixed HeLa cells using SPAG5 antibody (14726-1-AP) at dilution of 1:400 and CoraLite®488-Conjugated AffiniPure Goat Anti-Rabbit IgG(H+L) (SA00013-2).