

For Research Use Only

UCHL1/PGP9.5 Polyclonal antibody



Catalog Number: 14730-1-AP

Featured Product

46 Publications

Basic Information

Catalog Number: 14730-1-AP	GenBank Accession Number: BC000332	Purification Method: Antigen affinity purification
Size: 150ul , Concentration: 500 µg/ml by Nanodrop and 300 µg/ml by Bradford method using BSA as the standard;	GeneID (NCBI): 7345	Recommended Dilutions: WB 1:2000-1:12000 IHC 1:500-1:2000 IF 1:200-1:800
Source: Rabbit	Full Name: ubiquitin carboxyl-terminal esterase L1 (ubiquitin thiolesterase)	
Isotype: IgG	Calculated MW: 25 kDa	
Immunogen Catalog Number: AG6490	Observed MW: 27 kDa	

Applications

Tested Applications:

IF, IHC, WB, ELISA

Cited Applications:

CoIP, ELISA, IF, IHC, WB

Species Specificity:

human, mouse, rat

Cited Species:

human, monkey, mouse, Non-human primate, rat

Note-IHC: suggested antigen retrieval with TE buffer pH 9.0; (*) Alternatively, antigen retrieval may be performed with citrate buffer pH 6.0

Positive Controls:

WB : A549 cells, C6 cells, NCI-H1299 cells, mouse brain tissue, rat brain tissue

IHC : mouse brain tissue,

IF : A549 cells, mouse brain tissue

Background Information

UCHL1(Ubiquitin carboxyl-terminal hydrolase isozyme L1) is a member of a gene family whose products hydrolyze small C-terminal adducts of ubiquitin to generate the ubiquitin monomer. Expression of UCHL1 is highly specific to neurons and to cells of the diffuse neuroendocrine system and their tumors. It is present in all neurons(PMID: 6343558). This protein is present in brain at concentrations at least 50 times greater than in other organs and is a major protein component of neuronal cytoplasm (PMID:7217993). And UCHL1 is a Parkinson's disease susceptibility gene (PMID:15048890).

Notable Publications

Author	Pubmed ID	Journal	Application
Haochen Jiang	28918935	Cell Metab	WB,IF
Stephanie A Eid	33105667	Biology (Basel)	
Brian Lin	29174332	Cell Stem Cell	IHC

Storage

Storage:

Store at -20°C. Stable for one year after shipment.

Storage Buffer:

PBS with 0.02% sodium azide and 50% glycerol pH 7.3.

Aliquoting is unnecessary for -20°C storage

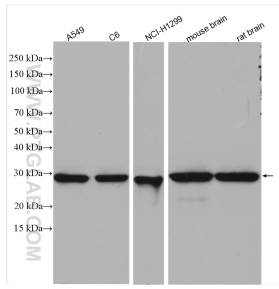
For technical support and original validation data for this product please contact:

T: 1 (888) 4PTGLAB (1-888-478-4522) (toll free in USA), or 1(312) 455-8498 (outside USA)

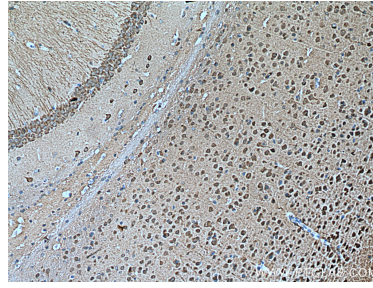
E: proteintech@ptglab.com
W: ptglab.com

This product is exclusively available under Proteintech Group brand and is not available to purchase from any other manufacturer.

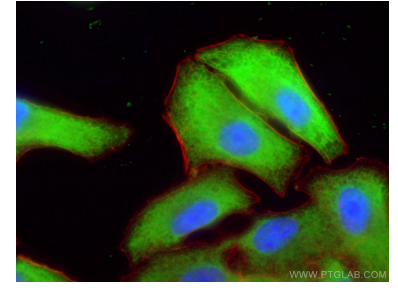
Selected Validation Data



Various lysates were subjected to SDS PAGE followed by western blot with 14730-1-AP (UCHL1/PGP9.5 antibody) at dilution of 1:6000 incubated at room temperature for 1.5 hours.



Immunohistochemical analysis of paraffin-embedded mouse brain tissue slide using 14730-1-AP (UCHL1/PGP9.5 antibody) at dilution of 1:1000 (under 10x lens). Heat mediated antigen retrieval with Tris-EDTA buffer (pH 9.0).



Immunofluorescent analysis of (-20°C Ethanol) fixed A549 cells using UCHL1/PGP9.5 antibody (14730-1-AP) at dilution of 1:400 and CoraLite®488-Conjugated AffiniPure Goat Anti-Rabbit IgG(H+L).