

For Research Use Only

# AARE Polyclonal ANTIBODY



Catalog Number: 14758-1-AP

1 Publications

## Basic Information

Catalog Number:  
14758-1-AP

Size:  
20 µg/150 µl

Source:  
Rabbit

Isotype:  
IgG

Purification Method:  
Antigen affinity purification

Immunogen Catalog Number:  
AG6511

GenBank Accession Number:  
BC000362

GeneID (NCBI):  
327

Full Name:  
N-acetylaminoacyl-peptidase

Calculated MW:  
81 kDa

Observed MW:  
66-80 kDa

Recommended Dilutions:  
WB 1:500-1:2000

IHC 1:20-1:200

## Applications

Tested Applications:  
IHC, WB, ELISA

Cited Applications:  
WB

Species Specificity:  
human,mouse,rat

**Note: suggested antigen retrieval with TE buffer pH 9.0; (\*) Alternatively, antigen retrieval may be performed with citrate buffer pH 6.0**

Positive Controls:

WB : mouse liver tissue; COLO 320 cells, HeLa cells, Jurkat cells

IHC : human liver tissue;

## Background Information

APH, (APEH, acylpeptidase), which catalyzes the hydrolysis of the terminal acetylated amino acid preferentially from small acetylated peptides. The acylpeptidase is a homotetrameric protein of 300 kDa with each subunit consisting of 732 amino acid residues. A range of molecular masses have been reported for APH by previous investigators, including 80 kD, 75 kD and 69 kD. This antibody can recognize at least 2 isoforms of APH.

## Notable Publications

Author	Pubmed ID	Journal	Application
Rubayet Elahi	31068431	mSphere	WB

## Storage

Storage:  
Store at -20°C. Stable for one year after shipment.

Storage Buffer:  
PBS with 0.02% sodium azide and 50% glycerol pH 7.3.

Aliquoting is unnecessary for -20°C storage

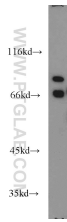
For technical support and original validation data for this product please contact:

T: 1 (888) 4PTGLAB (1-888-478-4522) (toll free in USA), or 1(312) 455-8498 (outside USA)

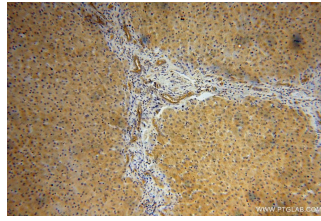
E: [proteintech@ptglab.com](mailto:proteintech@ptglab.com)  
W: [ptglab.com](http://ptglab.com)

This product is exclusively available under Proteintech Group brand and is not available to purchase from any other manufacturer.

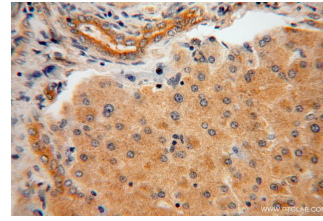
## Selected Validation Data



mouse liver tissue were subjected to SDS PAGE followed by western blot with 14758-1-AP(AARE antibody) at dilution of 1:1000 incubated at room temperature for 1.5 hours



Immunohistochemical analysis of paraffin-embedded human liver using 14758-1-AP(AARE antibody) at dilution of 1:100 (under 10x lens)



Immunohistochemical analysis of paraffin-embedded human liver using 14758-1-AP(AARE antibody) at dilution of 1:100 (under 40x lens)