

For Research Use Only

# SEC22B Polyclonal ANTIBODY



Catalog Number: 14776-1-AP

1 Publications

## Basic Information

Catalog Number:  
14776-1-AP

Size:  
32 µg/150 µl

Source:  
Rabbit

Isotype:  
IgG

Purification Method:  
Antigen affinity purification

Immunogen Catalog Number:  
AC6077

GenBank Accession Number:  
BC001364

GeneID (NCBI):  
9554

Full Name:  
SEC22 vesicle trafficking protein homolog B  
(*S. cerevisiae*)

Calculated MW:  
25 kDa

Observed MW:  
24 kDa

Recommended Dilutions:

WB 1:500-1:2000

IHC 1:50-1:500

IF 1:50-1:500

## Applications

Tested Applications:

IF, IHC, WB, ELISA

Cited Applications:

IF, WB

Species Specificity:

human,mouse,rat

Cited Species:

mouse

**Note: suggested antigen retrieval with TE buffer pH 9.0; (\*) Alternatively, antigen retrieval may be performed with citrate buffer pH 6.0**

Positive Controls:

WB : MCF7 cells; HeLa cells, rat liver tissue

IHC : human breast cancer tissue; human liver tissue

IF : MCF-7 cells;

## Background Information

Soluble N-ethylmaleimide-sensitive factor (NSF) attachment protein receptor (SNARE) proteins are critical components of the membrane fusion machinery (PMID: 20163564). SEC22B is a SNARE involved in endoplasmic reticulum (ER)/Golgi membrane trafficking. SEC22B localizes to the ER-Golgi intermediate compartment (ERGIC) and has been identified as a regulator of antigen crosspresentation (PMID: 22153078).

## Notable Publications

Author	Pubmed ID	Journal	Application
Meja Petkovic	24705552	Nat Cell Biol	WB,IF

## Storage

Storage:

Store at -20°C. Stable for one year after shipment.

Storage Buffer:

PBS with 0.02% sodium azide and 50% glycerol pH 7.3.

Aliquoting is unnecessary for -20°C storage

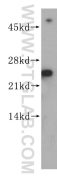
For technical support and original validation data for this product please contact:

T: 1 (888) 4PTGLAB (1-888-478-4522) (toll free in USA), or 1(312) 455-8498 (outside USA)

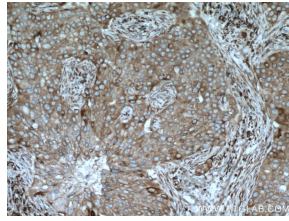
E: [proteintech@ptglab.com](mailto:proteintech@ptglab.com)  
W: [ptglab.com](http://ptglab.com)

This product is exclusively available under Proteintech Group brand and is not available to purchase from any other manufacturer.

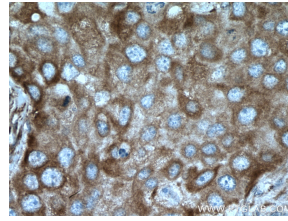
## Selected Validation Data



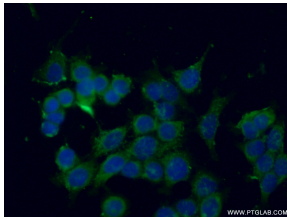
MCF7 cells were subjected to SDS PAGE followed by western blot with 14776-1-AP(SEC22B antibody) at dilution of 1:500 incubated at room temperature for 1.5 hours



Immunohistochemistry of paraffin-embedded human breast cancer tissue slide using 14776-1-AP(SEC22B antibody) at dilution of 1:200 (under 10x lens) heat mediated antigen retrieved with Tris-EDTA buffer(pH9).



Immunohistochemistry of paraffin-embedded human breast cancer tissue slide using 14776-1-AP(SEC22B antibody) at dilution of 1:200 (under 40x lens) heat mediated antigen retrieved with Tris-EDTA buffer(pH9).



Immunofluorescent analysis of (-20) Ethanol fixed MCF-7 cells using 14776-1-AP(SEC22B antibody) at dilution of 1:50 and Alexa Fluor 488-conjugated AffiniPure Goat Anti-Rabbit IgG(H+L)