

For Research Use Only

PSMD11 Polyclonal antibody

Catalog Number: 14786-1-AP

Featured Product

5 Publications



Basic Information

Catalog Number:

14786-1-AP

Size:

150ul, Concentration: 350 µg/ml by Nanodrop and 233 µg/ml by Bradford method using BSA as the standard;

Source:

Rabbit

Isotype:

IgG

Immunogen Catalog Number:

AG6435

GenBank Accession Number:

BC000437

GeneID (NCBI):

5717

Full Name:

proteasome (prosome, macropain) 26S subunit, non-ATPase, 11

Calculated MW:

47 kDa

Observed MW:

47 kDa

Purification Method:

Antigen affinity purification

Recommended Dilutions:

WB 1:500-1:2000

IP 0.5-4.0 ug for IP and 1:500-1:1000 for WB

IF 1:10-1:100

Applications

Tested Applications:

IF, IP, WB, ELISA

Cited Applications:

IF, WB

Species Specificity:

human, mouse, rat

Cited Species:

human, mouse

Positive Controls:

WB: HeLa cells, MCF-7 cells, mouse testis tissue, rat brain tissue

IP: MCF-7 cells,

IF: MCF-7 cells,

Background Information

The 26S proteasome is a 2.5-MDa molecular machine that degrades ubiquitinated proteins in eukaryotic cells. It consists of a proteolytic core particle and two 19S regulatory particles (RPs) composed of 6 ATPase (RPT) and 13 non-ATPase (RPN) subunits. PSMD11 gene encodes 19S proteasome subunit RPN6. Increased levels of PSMD11 and corresponding increased assembly of the 26S/30S proteasome is correlated with high proteasome activity. In vitro ectopic expression of PSMD11 is sufficient to increase proteasome assembly and activity. Latest research has implicated PSMD11 in regulation of human embryonic stem cells function.

Notable Publications

Author	Pubmed ID	Journal	Application
Linlin Zhao	33517884	BMC Dev Biol	WB, IF
Vidya Sagar Kesireddy	31431059	FASEB J	WB
Lele Wang	29665121	J Cell Biochem	WB

Storage

Storage:

Store at -20°C. Stable for one year after shipment.

Storage Buffer:

PBS with 0.02% sodium azide and 50% glycerol pH 7.3.

Aliquoting is unnecessary for -20°C storage

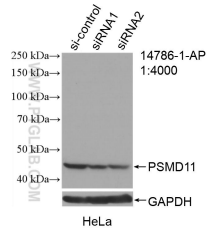
For technical support and original validation data for this product please contact:

T: 1 (888) 4PTGLAB (1-888-478-4522) (toll free in USA), or 1(312) 455-8498 (outside USA)

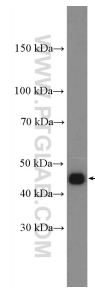
E: proteintech@ptglab.com
W: ptglab.com

This product is exclusively available under Proteintech Group brand and is not available to purchase from any other manufacturer.

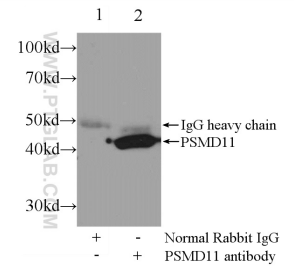
Selected Validation Data



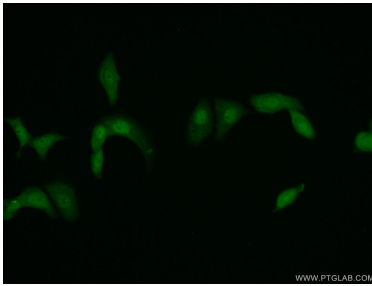
WB result of PSMD11 antibody (14786-1-AP; 1:4000; incubated at room temperature for 1.5 hours) with sh-Control and sh-PSMD11 transfected HeLa cells.



HeLa cells were subjected to SDS PAGE followed by western blot with 14786-1-AP (PSMD11 Antibody) at dilution of 1:1000 incubated at room temperature for 1.5 hours.



IP Result of anti-PSMD11 (IP:14786-1-AP, 3ug; Detection:14786-1-AP 1:500) with MCF-7 cells lysate 2000ug.



Immunofluorescent analysis of MCF-7 cells using 14786-1-AP (PSMD11 antibody) at dilution of 1:25 and Alexa Fluor 488-conjugated AffiniPure Goat Anti-Rabbit IgG(H+L).