

For Research Use Only

GOT2 Polyclonal antibody

Catalog Number: 14800-1-AP

Featured Product

21 Publications



Basic Information

Catalog Number: 14800-1-AP	GenBank Accession Number: BC000525	Purification Method: Antigen affinity purification
Size: 150ul, Concentration: 550 µg/ml by Nanodrop and 240 µg/ml by Bradford method using BSA as the standard;	GeneID (NCBI): 2806	Recommended Dilutions: WB 1:2000-1:16000 IHC 1:50-1:500 IF 1:20-1:200
Source: Rabbit	Full Name: glutamic-oxaloacetic transaminase 2, mitochondrial (aspartate aminotransferase 2)	
Isotype: IgG	Calculated MW: 47 kDa	
Immunogen Catalog Number: AG6514	Observed MW: 43-45 kDa	

Applications

Tested Applications:
FC, IF, IHC, WB, ELISA

Cited Applications:
CoIP, IHC, WB

Species Specificity:
human, mouse, rat

Cited Species:
human, mouse, rat

Note-IHC: suggested antigen retrieval with TE buffer pH 9.0; (*) Alternatively, antigen retrieval may be performed with citrate buffer pH 6.0

Positive Controls:

WB: A431 cells, HepG2 cells, mouse heart tissue, mouse spleen tissue, HEK-293 cells, mouse brain, rat brain

IHC: human breast cancer tissue, human skin tissue, human liver tissue, human kidney tissue

IF: MCF-7 cells,

Background Information

GOT2 encodes the mitochondrial glutamate oxaloacetate transaminase and plays an essential role in the intracellular NAD(H) redox balance. Upregulation of GOT2 has been reported in various cancers, including breast cancer and pancreatic cancer. GOT2 mutation leads to autosomal recessive neurometabolic disorder.

Notable Publications

Author	Pubmed ID	Journal	Application
Yajuan Zhao	34557495	Front Cell Dev Biol	IHC
Shizhen Qin	27575953	J Proteome Res	WB
Rongfu Tu	34601505	Oncogene	WB

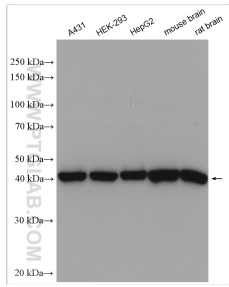
Storage

Storage:
Store at -20°C. Stable for one year after shipment.
Storage Buffer:
PBS with 0.02% sodium azide and 50% glycerol pH 7.3.
Aliquoting is unnecessary for -20°C storage

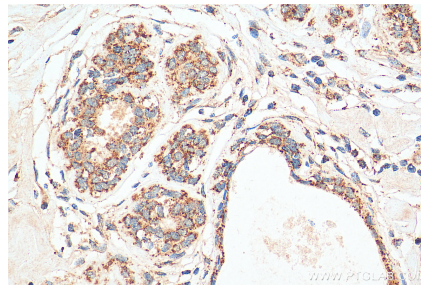
For technical support and original validation data for this product please contact:
T: 1 (888) 4PTGLAB (1-888-478-4522) (toll free in USA), or 1(312) 455-8498 (outside USA)
E: proteintech@ptglab.com
W: ptglab.com

This product is exclusively available under Proteintech Group brand and is not available to purchase from any other manufacturer.

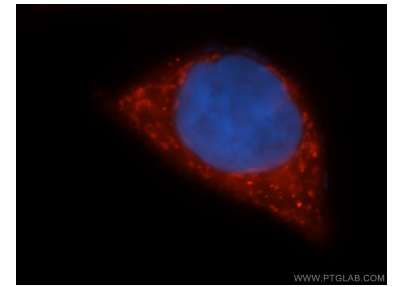
Selected Validation Data



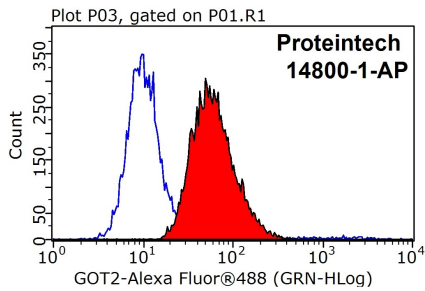
Various lysates were subjected to SDS PAGE followed by western blot with 14800-1-AP (GOT2 antibody) at dilution of 1:8000 incubated at room temperature for 1.5 hours.



Immunohistochemical analysis of paraffin-embedded human breast cancer tissue slide using 14800-1-AP (GOT2 antibody) at dilution of 1:200 (under 40x lens). Heat mediated antigen retrieval with Tris-EDTA buffer (pH 9.0).



Immunofluorescent analysis of MCF-7 cells, using GOT2 antibody 14800-1-AP at 1:50 dilution and Rhodamine-labeled goat anti-rabbit IgG (red). Blue pseudocolor = DAPI (fluorescent DNA dye).



1×10^6 HEK-293 cells were stained with 0.2ug GOT2 antibody (14800-1-AP, red) and control antibody (blue). Fixed with 90% MeOH blocked with 3% BSA (30 min). Alexa Fluor 488-conjugated AffiniPure Goat Anti-Rabbit IgG(H+L) with dilution 1:1000.