

For Research Use Only

OBFC2B Polyclonal antibody

Catalog Number: 14809-1-AP

Featured Product

3 Publications



Basic Information

Catalog Number:

14809-1-AP

Size:

150ul, Concentration: 500 ug/ml by Nanodrop and 300 ug/ml by Bradford method using BSA as the standard;

Source:

Rabbit

Isotype:

IgG

Immunogen Catalog Number:

AG6532

GenBank Accession Number:

BC001079

GeneID (NCBI):

79035

UNIPROT ID:

Q9BQ15

Full Name:

oligonucleotide/oligosaccharide-binding fold containing 2B

Calculated MW:

22 kDa

Observed MW:

30-33 kDa

Purification Method:

Antigen affinity purification

Recommended Dilutions:

WB 1:2000-1:12000

IP 0.5-4.0 ug for 1.0-3.0 mg of total protein lysate

IHC 1:20-1:200

IF/ICC 1:10-1:100

Applications

Tested Applications:

WB, IHC, IF/ICC, IP, ELISA

Cited Applications:

WB, IHC

Species Specificity:

human, mouse, rat

Cited Species:

human

Positive Controls:

WB : HepG2 cells, NIH/3T3 cells, HeLa cells

IP : HeLa cells,

IHC : human ovary tumor tissue, human pancreas tissue

IF/ICC : HeLa cells,

Note-IHC: suggested antigen retrieval with TE buffer pH 9.0; (*) Alternatively, antigen retrieval may be performed with citrate buffer pH 6.0

Background Information

OBFC2B, also named as NABP2 or SSB1, is a 211 amino acid protein, which belongs to the SOSS-B family. OBFC2B localizes to nuclear foci following DNA damage. OBFC2B is a component of the SOSS complex, a multiprotein complex that functions downstream of the MRN complex to promote DNA repair and G2/M checkpoint. In the SOSS complex, OBFC2B acts as a sensor of single-stranded DNA that binds to single-stranded DNA, in particular to polypyrimidines. The calculated molecular weight of OBFC2B is 22 kDa, but modified OBFC2B is about 32 kDa.

Notable Publications

Author	Pubmed ID	Journal	Application
Anaïs Aulas	30425239	Cell Death Dis	WB
Jeffrey R Skaar	25675981	Cell Res	WB
Bowen Li	37113629	J Inflamm Res	WB,IHC

Storage

Storage:

Store at -20°C. Stable for one year after shipment.

Storage Buffer:

PBS with 0.02% sodium azide and 50% glycerol pH 7.3.

Aliquoting is unnecessary for -20°C storage

*** 20ul sizes contain 0.1% BSA

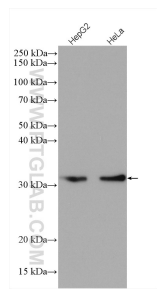
For technical support and original validation data for this product please contact:

T: 1 (888) 4PTGLAB (1-888-478-4522) (toll free in USA), or 1(312) 455-8498 (outside USA)

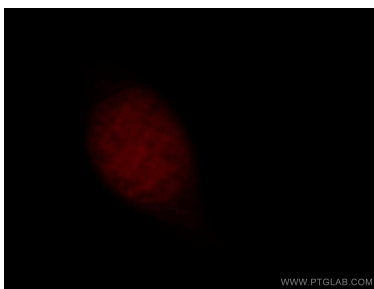
E: proteintech@ptglab.com
W: ptglab.com

This product is exclusively available under Proteintech Group brand and is not available to purchase from any other manufacturer.

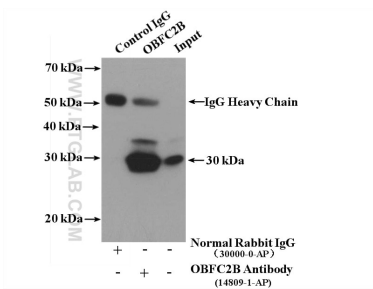
Selected Validation Data



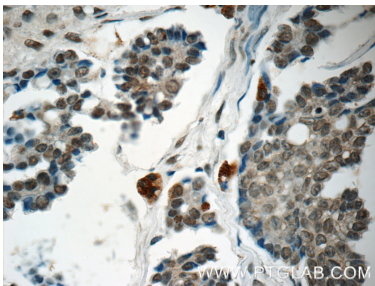
Various lysates were subjected to SDS PAGE followed by western blot with 14809-1-AP (OBFC2B antibody) at dilution of 1:6000 incubated at room temperature for 1.5 hours.



Immunofluorescent analysis of HeLa cells, using OBFC2B antibody 14809-1-AP at 1:25 dilution and Rhodamine-labeled goat anti-rabbit IgG (red).



IP result of anti-OBFC2B (IP: 14809-1-AP, 4ug; Detection: 14809-1-AP 1:500) with HeLa cells lysate 3200ug.



Immunohistochemical analysis of paraffin-embedded human ovary tumor tissue slide using 14809-1-AP (OBFC2B Antibody) at dilution of 1:50 (under 40x lens).