

For Research Use Only

GPR37/Pael-R Polyclonal antibody

Catalog Number:14820-1-AP

Featured Product

9 Publications



Basic Information

Catalog Number:

14820-1-AP

Size:

150ul , Concentration: 700 ug/ml by Nanodrop and 313 ug/ml by Bradford method using BSA as the standard;

Source:

Rabbit

Isotype:

IgG

Immunogen Catalog Number:

AG6591

GenBank Accession Number:

BC040007

GeneID (NCBI):

2861

UNIPROT ID:

O15354

Full Name:

G protein-coupled receptor 37 (endothelin receptor type B-like)

Calculated MW:

67 kDa

Observed MW:

50-55 kDa

Purification Method:

Antigen affinity purification

Recommended Dilutions:

WB 1:500-1:3200

IHC 1:50-1:500

IF-P 1:50-1:500

IF/ICC 1:50-1:500

Applications

Tested Applications:

WB, IHC, IF/ICC, IF-P, ELISA

Cited Applications:

WB, IF

Species Specificity:

human, mouse

Cited Species:

human, mouse

Positive Controls:

WB : mouse brain tissue,

IHC : mouse brain tissue,

IF-P : mouse brain tissue,

IF/ICC : HeLa cells,

Note-IHC: suggested antigen retrieval with TE buffer pH 9.0; (*) Alternatively, antigen retrieval may be performed with citrate buffer pH 6.0

Background Information

The orphan G protein-coupled receptor GPR37, also known as PAELR (parkin-associated endothelin receptor-like receptor) or ETBR-LP-1 (endothelin B receptor-like protein 1), is a 613 aa, multi-pass membrane protein predominantly expressed in the brain. It is a substrate of parkin (PARK2). When overexpressed in cells, GPR37 tends to become insoluble, unfolded, and ubiquitinated in vivo. Accumulation of the unfolded protein may lead to dopaminergic neuronal death in juvenile Parkinson disease (JPD). This antibody recognizes endogenous GPR37, which migrates as an approximately 50-55 kDa band in SDS-PAGE (PMID:17519329).

Notable Publications

| Author | Pubmed ID | Journal | Application |
|-----------------|-----------|---------------|-------------|
| Fei He | 36194973 | Phytomedicine | IF, WB |
| Beihui Liu | 30260505 | Glia | WB |
| Birgit S Berger | 28341812 | EMBO Rep | WB, IF |

Storage

Storage:

Store at -20°C. Stable for one year after shipment.

Storage Buffer:

PBS with 0.02% sodium azide and 50% glycerol pH 7.3.

Aliquoting is unnecessary for -20°C storage

*** 20ul sizes contain 0.1% BSA

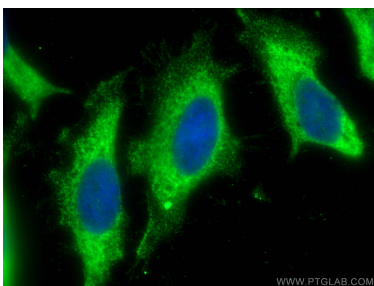
For technical support and original validation data for this product please contact:

T: 1 (888) 4PTGLAB (1-888-478-4522) (toll free in USA), or 1(312) 455-8498 (outside USA)

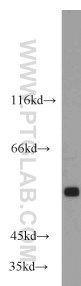
E: proteintech@ptglab.com
W: ptglab.com

This product is exclusively available under Proteintech Group brand and is not available to purchase from any other manufacturer.

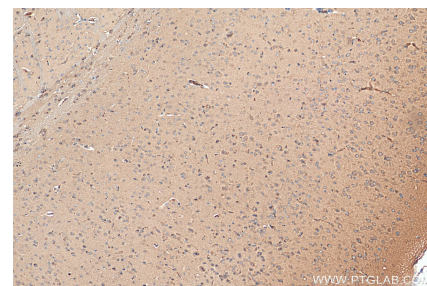
Selected Validation Data



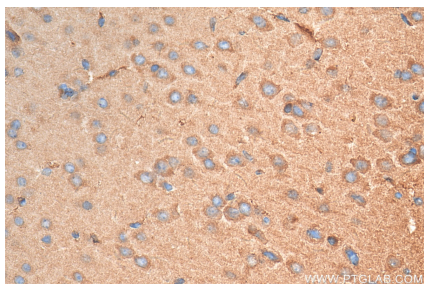
Immunofluorescent analysis of (-20°C Methanol) fixed HeLa cells using GPR37/Pael-R antibody (14820-1-AP) at dilution of 1:100 and CoraLite®488-Conjugated AffiniPure Goat Anti-Rabbit IgG(H+L).



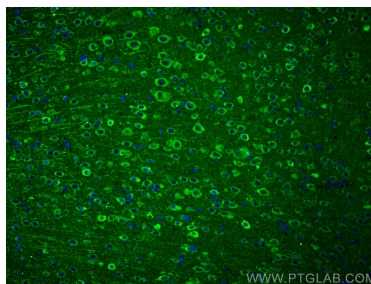
mouse brain tissue were subjected to SDS PAGE followed by western blot with 14820-1-AP (GPR37/Pael-R antibody) at dilution of 1:1600 incubated at room temperature for 1.5 hours.



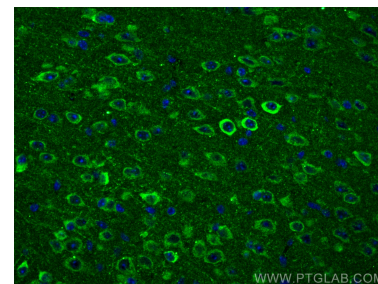
Immunohistochemical analysis of paraffin-embedded mouse brain tissue slide using 14820-1-AP (GPR37/Pael-R antibody) at dilution of 1:200 (under 10x lens). Heat mediated antigen retrieval with Tris-EDTA buffer (pH 9.0).



Immunohistochemical analysis of paraffin-embedded mouse brain tissue slide using 14820-1-AP (GPR37/Pael-R antibody) at dilution of 1:200 (under 40x lens). Heat mediated antigen retrieval with Tris-EDTA buffer (pH 9.0).



Immunofluorescent analysis of (4% PFA) fixed mouse brain tissue using GPR37/Pael-R antibody (14820-1-AP) at dilution of 1:200 and CoraLite®488-Conjugated AffiniPure Goat Anti-Rabbit IgG(H+L).



Immunofluorescent analysis of (4% PFA) fixed mouse brain tissue using GPR37/Pael-R antibody (14820-1-AP) at dilution of 1:200 and CoraLite®488-Conjugated AffiniPure Goat Anti-Rabbit IgG(H+L).