

GIPC1 Polyclonal ANTIBODY

Catalog Number: 14822-1-AP

Featured Product

2 Publications

Basic Information

Catalog Number:
14822-1-AP

Size:
62 µg/150 µl

Source:
Rabbit

Isotype:
IgG

Purification Method:
Antigen affinity purification

Immunogen Catalog Number:
AC6597

GenBank Accession Number:
BC000410

GeneID (NCBI):
10755

Full Name:
GIPC PDZ domain containing family, member 1

Calculated MW:
36 kDa

Observed MW:
42 kDa

Recommended Dilutions:

WB 1:600-1:4000

IP 0.5-4.0 µg for IP and 1:500-1:1000 for WB

IHC 1:50-1:500

IF 1:10-1:100

Applications

Tested Applications:
IF, IHC, IP, WB, ELISA

Cited Applications:
WB

Species Specificity:
human,mouse,rat

Cited Species:
human, mouse

Note-IHC: suggested antigen retrieval with TE buffer pH 9.0; (*) Alternatively, antigen retrieval may be performed with citrate buffer pH 6.0

Positive Controls:

WB : HepG2 cells; mouse skeletal muscle tissue

IP : mouse brain tissue;

IHC : human breast cancer tissue;

IF : HepG2 cells; A2780 cells

Background Information

Notable Publications

Author	Pubmed ID	Journal	Application
Jorge Carretero-Ortega	31050647	Elife	WB
Nahoko Eiraku	31365832	FASEB J	WB

Storage

Storage:

Store at -20°C. Stable for one year after shipment.

Storage Buffer:

PBS with 0.02% sodium azide and 50% glycerol pH 7.3.

Aliquoting is unnecessary for -20°C storage

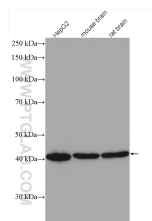
For technical support and original validation data for this product please contact:

T: 1 (888) 4PTGLAB (1-888-478-4522) (toll free in USA), or 1(312) 455-8498 (outside USA)

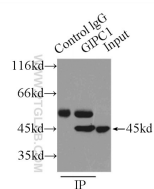
E: proteintech@ptglab.com
W: ptglab.com

This product is exclusively available under Proteintech Group brand and is not available to purchase from any other manufacturer.

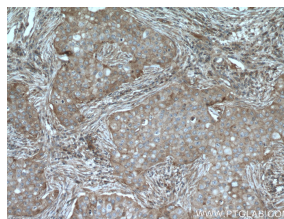
Selected Validation Data



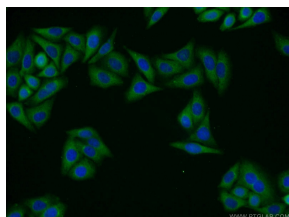
Various lysates were subjected to SDS PAGE followed by western blot with 14822-1-AP (GIPC1 antibody) at dilution of 1:3000 incubated at room temperature for 1.5 hours



IP Result of anti-GIPC1 (IP:14822-1-AP, 4ug; Detection:14822-1-AP 1:500) with mouse brain tissue lysate 9500ug.



Immunohistochemical analysis of paraffin-embedded human breast cancer tissue slide using 14822-1-AP (GIPC1 antibody) at dilution of 1:200 (under 10x lens) heat mediated antigen retrieved with Tris-EDTA buffer(pH9).



Immunofluorescent analysis of HepG2 cells using 14822-1-AP(GIPC1 antibody) at dilution of 1:25 and Alexa Fluor 488-conjugated AffiniPure Goat Anti-Rabbit IgG(H+L)