

For Research Use Only

RPS6 Polyclonal antibody

Catalog Number: 14823-1-AP **9 Publications**



Basic Information

Catalog Number:

14823-1-AP

Size:

150ul , Concentration: 650 µg/ml by Nanodrop and 333 µg/ml by Bradford method using BSA as the standard;

Source:

Rabbit

Isotype:

IgG

Immunogen Catalog Number:

AG6599

GenBank Accession Number:

BC000524

GeneID (NCBI):

6194

Full Name:

ribosomal protein S6

Calculated MW:

29 kDa

Observed MW:

29 kDa

Purification Method:

Antigen affinity purification

Recommended Dilutions:

WB 1:500-1:1000

IP 0.5-4.0 ug for IP and 1:200-1:1000 for WB

Applications

Tested Applications:

IP, WB, ELISA

Cited Applications:

IF, WB

Species Specificity:

human

Cited Species:

human, mouse, rat, zebrafish

Positive Controls:

WB : K-562 cells, MCF-7 cells, mouse kidney tissue

IP : MCF-7 cells,

Background Information

Ribosomal protein S6 (RPS6), Phosphoprotein NP33. It may play an important role in controlling cell growth and proliferation through the selective translation of particular classes of mRNA. Ribosomal protein S6 is the major substrate of protein kinases in eukaryote ribosomes. The phosphorylation is stimulated by growth factors, tumor promoting agents, and mitogens. It is dephosphorylated at growth arrest. Phosphorylated at Ser-235 and Ser-236 by RPS6KA1 and RPS6KA3; phosphorylation at these sites facilitates the assembly of the preinitiation complex.

Notable Publications

Author	Pubmed ID	Journal	Application
Yuping Du	29745433	Mol Carcinog	WB
Dong Wang	26909613	Oncotarget	WB
Muhammad Waqas Usman	30042442	Cell Death Dis	WB

Storage

Storage:

Store at -20°C. Stable for one year after shipment.

Storage Buffer:

PBS with 0.02% sodium azide and 50% glycerol pH 7.3.

Aliquoting is unnecessary for -20°C storage

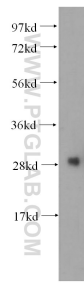
For technical support and original validation data for this product please contact:

T: 1 (888) 4PTGLAB (1-888-478-4522) (toll free in USA), or 1(312) 455-8498 (outside USA)

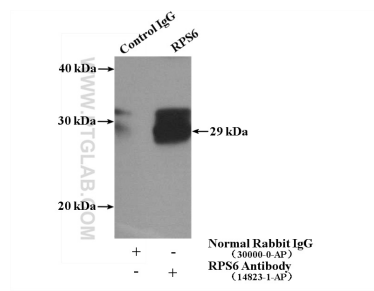
E: proteintech@ptglab.com
W: ptglab.com

This product is exclusively available under Proteintech Group brand and is not available to purchase from any other manufacturer.

Selected Validation Data



K-562 cells were subjected to SDS PAGE followed by western blot with 14823-1-AP (RPS6 antibody) at dilution of 1:500 incubated at room temperature for 1.5 hours.



IP Result of anti-RPS6 (IP:14823-1-AP, 4ug; Detection:14823-1-AP 1:400) with MCF-7 cells lysate 1040ug.