

For Research Use Only

LDHB Polyclonal antibody

Catalog Number: 14824-1-AP

Featured Product

69 Publications



Basic Information

Catalog Number:

14824-1-AP

Size:

150ul, Concentration: 500 ug/ml by Nanodrop;

Source:

Rabbit

Isotype:

IgG

Immunogen Catalog Number:

AG6605

GenBank Accession Number:

BC002362

GeneID (NCBI):

3945

UNIPROT ID:

P07195

Full Name:

lactate dehydrogenase B

Calculated MW:

36 kDa

Observed MW:

35 kDa

Purification Method:

Antigen affinity purification

Recommended Dilutions:

WB: 1:5000-1:50000

IP: 0.5-4.0 ug for 1.0-3.0 mg of total protein lysate

IHC: 1:400-1:1500

IF/ICC: 1:50-1:500

Applications

Tested Applications:

WB, IHC, IF/ICC, IP, ELISA

Cited Applications:

WB, IHC, IF, IP

Species Specificity:

human, mouse, rat

Cited Species:

human, mouse, rat, pig, chicken, bovine, sheep

Note-IHC: suggested antigen retrieval with TE buffer pH 9.0; (*) Alternatively, antigen retrieval may be performed with citrate buffer pH 6.0

Positive Controls:

WB: HeLa cells, DU 145 cells, mouse heart tissue, rat heart tissue

IP: mouse brain tissue,

IHC: human kidney tissue, human prostate cancer tissue

IF/ICC: HeLa cells,

Background Information

LDHB, also named as LDH-H and NY-REN-46, belongs to the LDH/MDH superfamily. And LDH family. It is an enzyme which catalyzes the reversible conversion of pyruvate and NADH to lactate and NAD⁺ in the glycolytic pathway. LDH comprises LDHA and LDHB, two subunits that are encoded by independent genes. In muscle or liver, most of the LDH is composed of four LDHA subunits, and preferably catalyzes the reduction of pyruvate to lactate. In heart and brain, LDH is mainly composed of four LDHB subunits, and predominantly catalyzes the oxidation of lactate to pyruvate. In other tissues, LDH is composed of both LDHA and LDHB. (PMID: 26269128, 31804482)

Notable Publications

Author	Pubmed ID	Journal	Application
Haoran Li	28990097	Mol Med Rep	
Lifang Li	36230229	Animals (Basel)	WB
Weimou Chen	34603058	Front Pharmacol	WB

Storage

Storage:

Store at -20°C. Stable for one year after shipment.

Storage Buffer:

PBS with 0.02% sodium azide and 50% glycerol, pH7.3

Aliquoting is unnecessary for -20°C storage

*** 20ul sizes contain 0.1% BSA

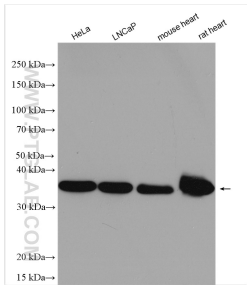
For technical support and original validation data for this product please contact:

T: 1 (888) 4PTGLAB (1-888-478-4522) (toll free in USA), or 1(312) 455-8498 (outside USA)

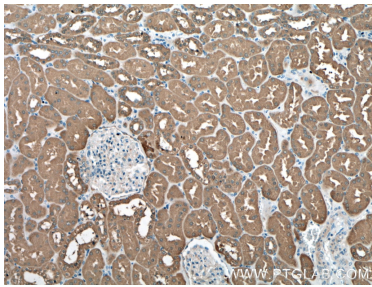
E: proteintech@ptglab.com
W: ptglab.com

This product is exclusively available under Proteintech Group brand and is not available to purchase from any other manufacturer.

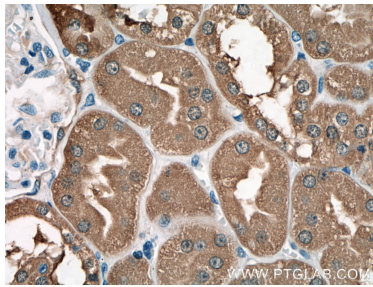
Selected Validation Data



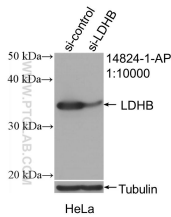
Various lysates were subjected to SDS PAGE followed by western blot with 14824-1-AP (LDHB antibody) at dilution of 1:15000 incubated at room temperature for 1.5 hours.



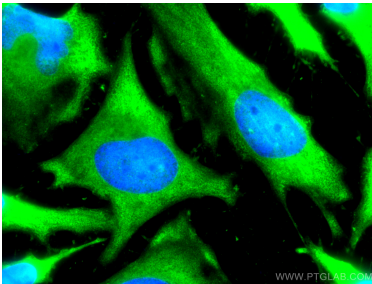
Immunohistochemical analysis of paraffin-embedded human kidney tissue slide using 14824-1-AP (LDHB antibody) at dilution of 1:400 (under 10x lens).



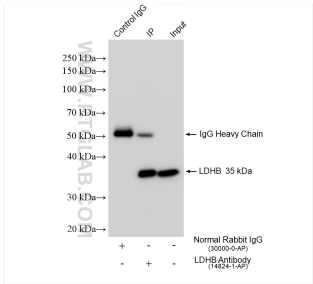
Immunohistochemical analysis of paraffin-embedded human kidney tissue slide using 14824-1-AP (LDHB antibody) at dilution of 1:400 (under 40x lens).



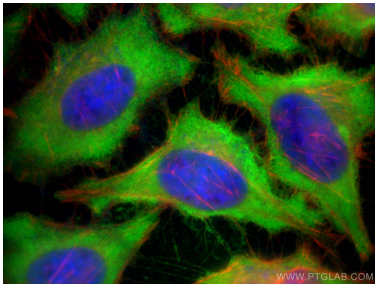
WB result of LDHB antibody (14824-1-AP; 1:10000; incubated at room temperature for 1.5 hours) with sh-Control and sh-LDHB transfected HeLa cells.



Immunofluorescent analysis of (-20°C Methanol) fixed HeLa cells using LDHB antibody (14824-1-AP) at dilution of 1:200 and CoraLite®488-Conjugated AffiniPure Goat Anti-Rabbit IgG(H+L).



IP result of anti-LDHB (IP:14824-1-AP, 4ug; Detection:14824-1-AP 1:20000) with mouse brain tissue lysate 2100 ug.



Immunofluorescent analysis of (-20°C Ethanol) fixed HeLa cells using LDHB antibody (14824-1-AP) at dilution of 1:400 and Multi-rAb CoraLite® Plus 488-Goat Anti-Rabbit Recombinant Secondary Antibody (H+L) (RGAR002), CL594-phalloidin (red).